

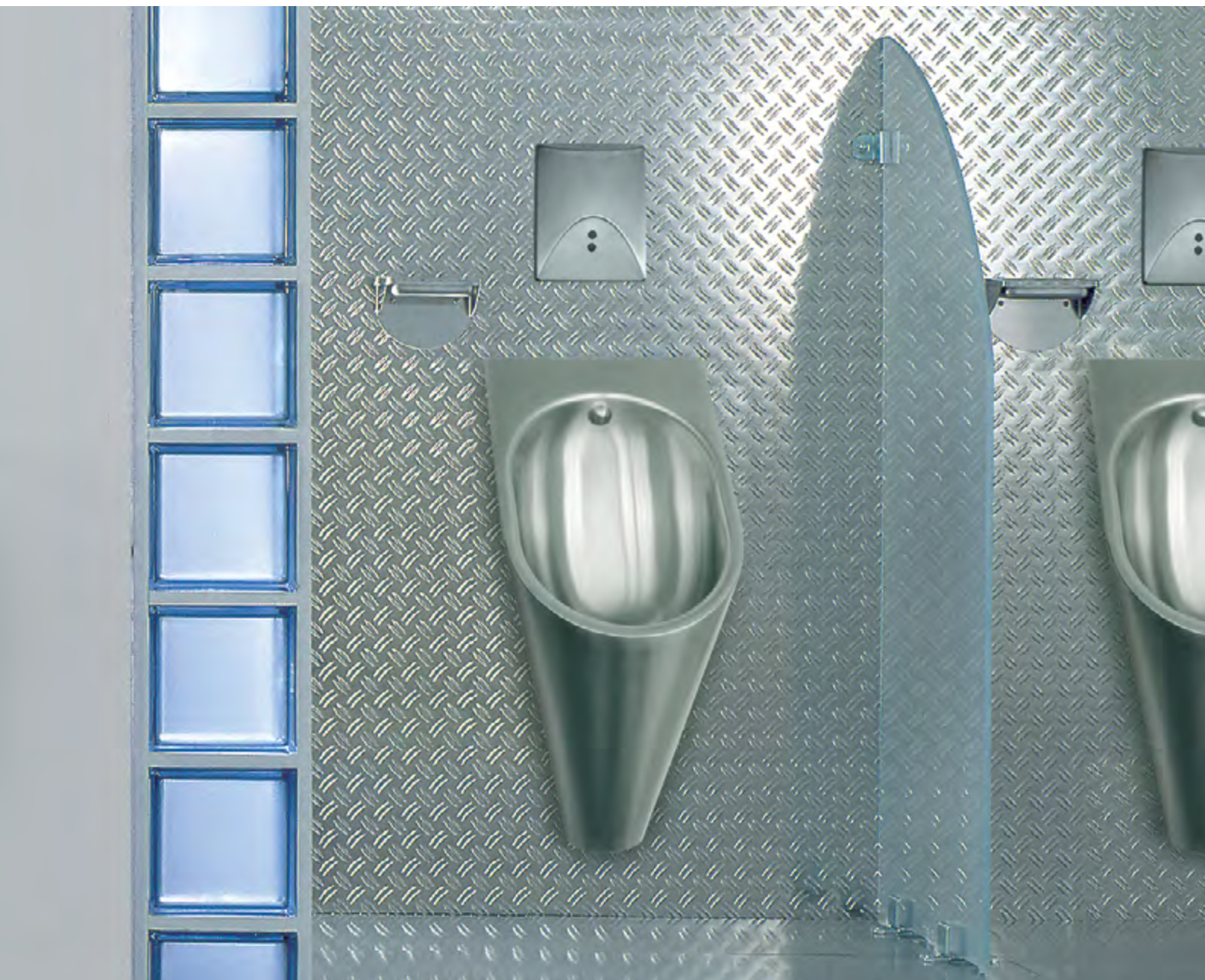
WC PANS, SANITARYWARE AND LAUNDRY PRODUCTS

Product Guide 2013

Index

WC Pans, Squat Pans, Urinals & Showers	1 - 18
Introduction to WC Pans	3 - 4
CMPX592 - Standard Wall Hung Pan	5
CMPX594 - Wall Hung Pan for Disabled	6
Franke Bundle Pack With Concealed Cistern	7
HDTX 597 Wall & Floor Mounted Shrouded Pan	8
HCL Pedestal WC Pan	9
Squat Pans	10
Stainless Steel Cistern	10
Franke Model BS Shower Trays	11
Shower Panels - Wall Mounted & Recessed	12
CMPX538 Wall Hung Urinal - Back & Top Entry Flushing	13
Barron Bowl Urinal	14
Urinals: CB101 (Flush Valve/Cistern) & CB102 (Autoflush)	15 - 16
Trough Urinals: TU101 (Flush Valve/Cistern) & TU102 (AutoFlush)	17 - 18
Wash Hand Basins	19 - 30
OVAL V Inset Vanity	21
Rondo 300 & 360 Inset / Undermount Vanity Basins	21
Undermount Wash Hand Basin	22
Oval A Wash Hand Basin (Wall Mounted)	22
Oval B Wash Hand Basin (Wall Mounted)	23
Rondo WM Wall Mounted Wash Hand Basin	23
FSW & FSWSB Heavy Duty Surround Wash Hand Basins (Wall Mounted)	24
WB001 Wash Hand Basin (Wall Mounted)	25

Eagle Brackets	25
WB Wash Hand Basins (Ranges)	26
Gallow Brackets & Legs (for Ranges)	26
Stratos Wash Hand Basins (Ranges)	27
Chronos Range of Wash Hand Basins (Ranges)	27
Flat Bed Wash Hand Basins (Ranges)	28
Custom Made Slab Sink With Knee Operated valves	28
Wash Fountain & Basin (Foot or Hand Operated)	29
DF Pedistal Type Drinking Fountain	30
LAUNDRY PRODUCTS	31 - 38
DLT Luxtub - Inset Type Washtrough	33
LDL Luxtub - Wall Mounted Washtrough	33
Falcon Brackets for Washtroughs	34
SIRX342 Washtrough	34
SIRX Washtrough Fixing Brackets	34
SIRX Washtrough Range	35
BWT Blanket Washtrough	36
Gallow Brackets & Legs (for Ranges of Washtroughs)	36
ET101 Fabricated Single Washtrough	37
ET102 Fabricated Double Washtrough	37
ET103 Fabricated Mini Washtrough	38
HRT Half Round Washtrough	38
OTHER FRANKE PRODUCTS	39 - 42
SPECIALISED MORTUARY EQUIPMENT	43
CERTIFICATES & TEST COMPLIANCE	44





WC PANS, SQUAT PANS, URINALS & SHOWERS

FRANKE WC PANS ARE DESIGNED TO REDUCE WATER CONSUMPTION BY UP TO 60%

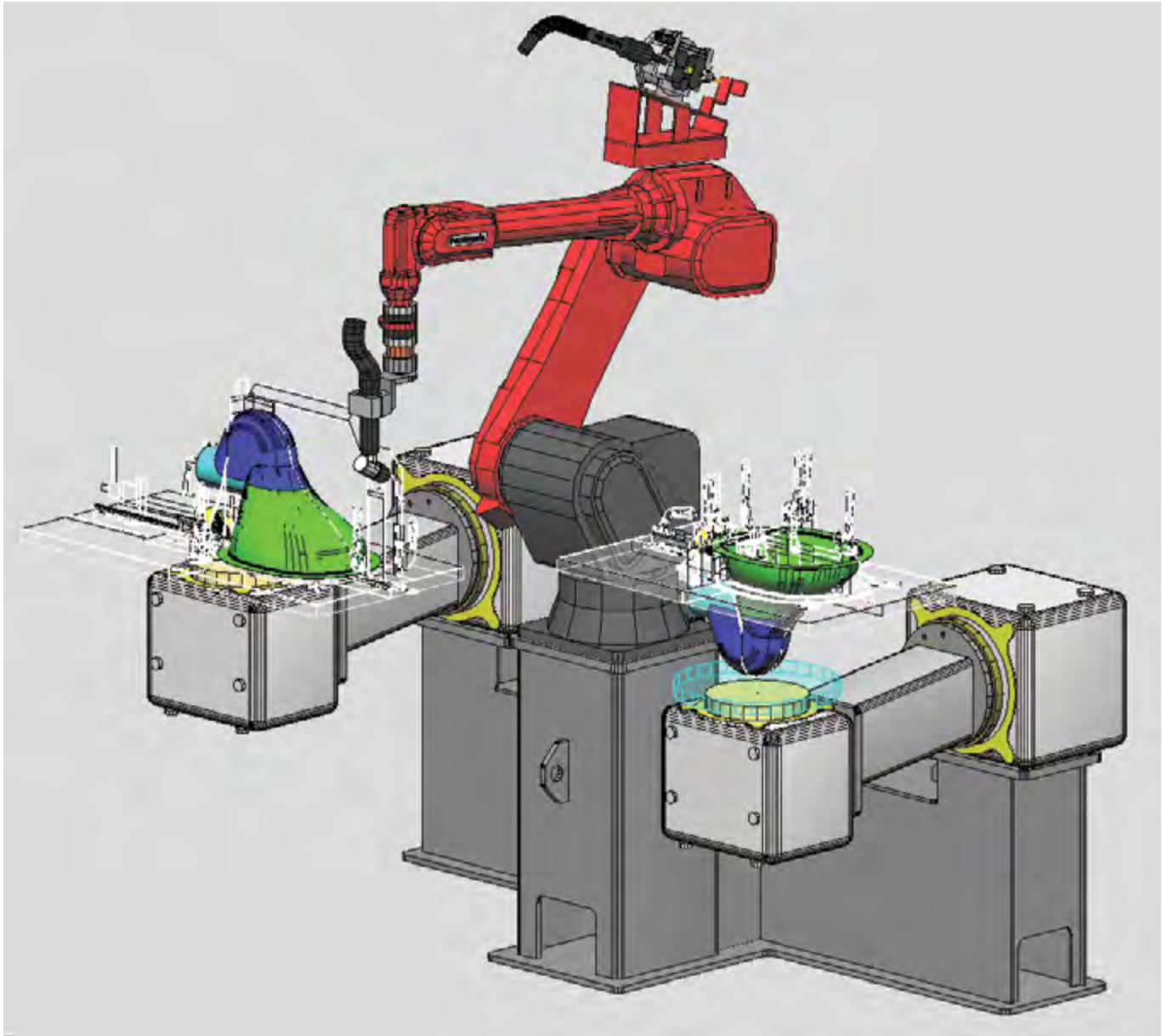
WC Pans consume up to 90 percent of water usage in commercial buildings. New technology has been introduced to produce a new range that delivers high performance and aesthetically pleasing designs, to compliment the rest of the Franke sanitary ware products. Designed for ultimate hygiene solutions and ease of installation in public ablutions, the range caters for a wide variety of applications, from recreational facilities, shopping centres, petrol stations, airports and stadiums.

Product features:

- Hygienic, quality designs and excellent low water consumption
- Aesthetically pleasing design, with satin finish
- Pressed bowl and P-trap, with minimal welding through robotic welding technology
- Full flush of 4 or 6 litres
- Sturdy design and safety compliant with low maintenance compared with ceramic and composite materials
- Internationally approved accreditation (Refer to Accreditations on page 04).

WC Pans, Squat Pans, Urinals & Showers

INTRODUCTION TO WC PANS



PLASMA CUTTING & MIG WELDING OF WC PAN ASSEMBLY

Franke South Africa invested in new technology since 2004 to enhance its export activities into Europe, Australia, New Zealand and Africa.

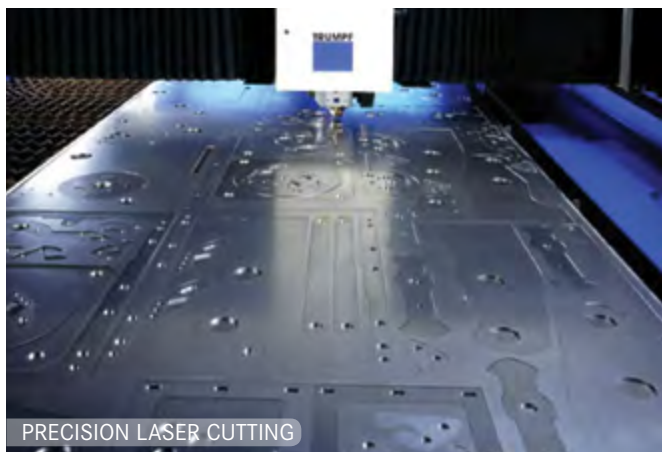
The new range of Stainless Steel wall hung pans is aesthetically pleasing and no longer limited to security applications.

Stainless Steel does not crack or chip and as such has a low replacement rate. Raised above the floor the new range of wall hung pans facilitates easier cleaning around the pan resulting in improved hygiene.

Each WC pan is pickled and passivated to prevent corrosion on welds.

Quality assurance . Each WC pan is tested to ensure that it complies with international standards. The Franke South Africa factory complies with ISO 9001:2008 Quality Management Standards.

ISO Certificate : Page 44



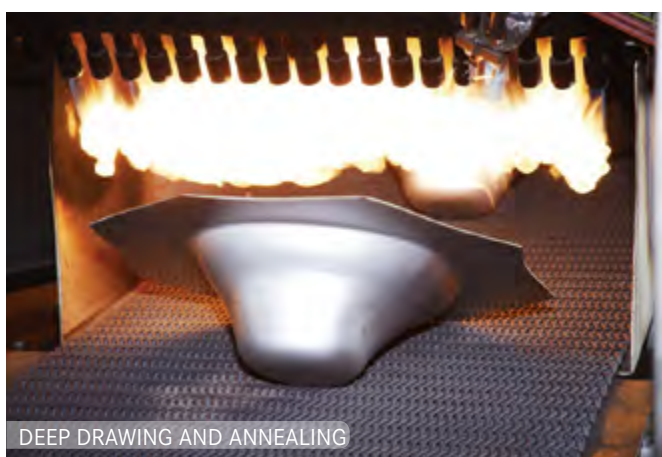
PRECISION LASER CUTTING

CAPITAL INVESTED TECHNOLOGY

Enhanced style and finishes have been achieved through a series of investment technologies.

Laser Technology

With the detailed precision, narrowest heat-affected zone and spot-on accuracy produced by advanced laser systems, we can provide the highest quality, intricate and detailed products.



DEEP DRAWING AND ANNEALING

Deep Drawing and Annealing

Deep drawing involves the use of metal dice to form blank sheets of metal into a desired shape thus reducing the need to weld components together. Deep drawing produces products that are significantly stronger and lighter. It also allows for a much smaller risk of error, consistent quality and a more predictable end product in a shorter period of time.

Robot Welding

Robot welding is the use of mechanised programmable tools (robots), which completely automate a welding process by both performing the weld and handling of the part. The automated process that robotic welding brings to steel fabrication provides much higher consistency and repeatability of quality welds. Robotic welding is used to ensure that each Pan conforms with the highest quality standards.



ROBOTIC PLASMA
CUTTING

Water Conservation & Quality Assurance (Page 44)

Each Franke WC pan complies with the following SABS standard:
SABS 1733: 2002

Each Franke WC pan complies with the following international standards:

- LGA DIN EN 997: 2008-03: paper removal test
- LGA DIN EN 997: 2008-03: 6 litre flushing test - solids and urine
- LGA DIN EN 997: 2008-03: 4 litre flushing test - solids and urine



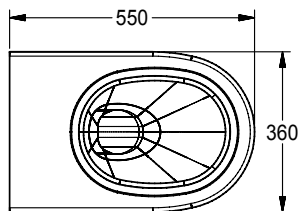
PRECISION
ROBOTIC WELDING

WC Pans, Squat Pans, Urinals & Showers

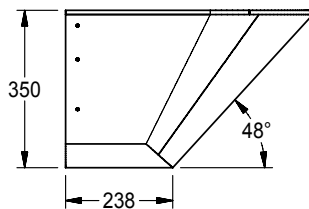
IMAGE	TYPE / MODEL	DIMENSIONS (L X D X H) mm	PRODUCT CODE
-------	--------------	---------------------------	--------------



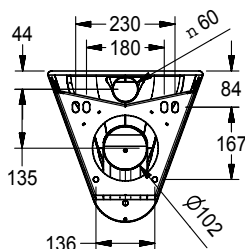
SEAT SOLD SEPARATELY



TOP VIEW



FRONT VIEW



BACK VIEW

CMPX592 - Standard Wall Hung Pan

Each wall hung pan is supplied with a 3mm thick Stainless Steel wall fixing bracket. The WC pan is fixed to the wall bracket with x 6 security screws.

Wall hung pans are designed to accommodate :

- Back or top entry inlet to suit 38mm flush pipe connection for a Flush Valve **or**
- Designed to fit onto a concealed flushing system

Franke Model CMPX592 Stainless Steel wall hung WC pan. Manufactured from Grade 304 (18/10) Stainless Steel, 360x550x350mm. Unit to be a back entry or a top entry (please specify). Unit to be supplied with 3mm thick Stainless Steel wall fixing bracket and fitted in accordance with manufacturers specifications using 4 x 8mm anchor bolts (elsewhere measured).

Compliant with SABS 1733:1998 and SABS 497:1991 WC pan to flush with 4 and 6 litres of water. Pan to withstand point load of 400kg as per international standards. Optional seat available (please specify).

Flushing - WC pan to make provision for:

Top entry flushing provisions **or**

Back entry flushing **or**

Flushing with Geberit system (Please specify)

(Flushing mechanisms specified elsewhere)

- Grade 304 (18/10) polished Stainless Steel
- Hygienic and vandal resistant
- Pressed components to ensure consistent quality and performance
- 4 or 6 litres flushing
- Heavy duty outer casing conceals the plumbing

CMPX592 - Back Entry	360x550x350	356108
CMPX592 - Top Entry	360x550x350	356176
CMPX592 with Geberit Kombifix Cistern - Back Entry	360x550x350	825064
CMPX592* with Seat Holes to suit Estonia Seat	360X550X350	356115
*Back Entry Only		

Optional Toilet Seats available (Please specify)

If required, seat must be specified with WC Pan

Estonia Soft Closing seat (black) or	356258
Estonia Soft Closing seat (white) or	356255

WATER CONSERVATION AND QUALITY ASSURANCE

Complies with SABS and LGA DIN EN International Standards.

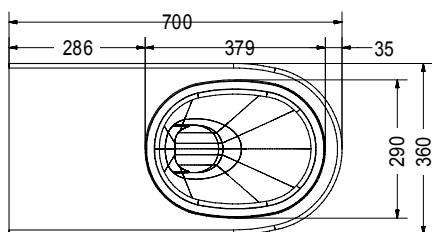
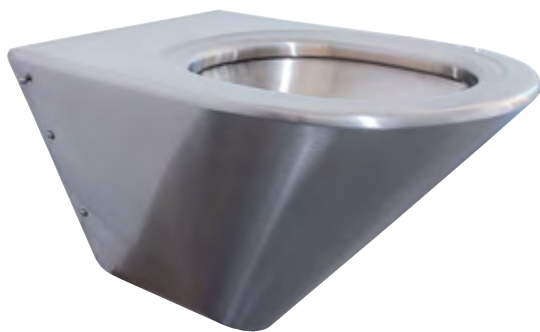
Please refer to Page 4 for details.

AST1172 - Watermark Certification (Page 44)

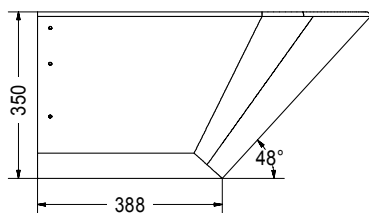
* SEAT SOLD SEPARATELY

WC Pans, Squat Pans, Urinals & Showers

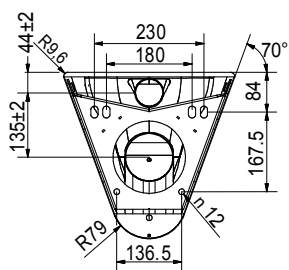
IMAGE	TYPE / MODEL	DIMENSIONS (L X D X H) mm	PRODUCT CODE
-------	--------------	---------------------------	--------------



TOP VIEW



FRONT VIEW



BACK VIEW

CMPX594 - Wall Hung Pan for Disabled

Each wall hung pan is supplied with a 3mm thick Stainless Steel wall fixing bracket. The WC pan is fixed to the wall bracket with x 6 security screws.

Wall hung pans are designed to accommodate :

- Back or top entry inlet to suit 38mm flush pipe connection for a Flush Valve or
- Designed to fit onto a concealed flushing system

Franke Model CMPX594 Stainless Steel wall hung WC pan. Manufactured from Grade 304 (18/10) Stainless Steel, 360x700x350mm. Unit to be a back entry or a top entry (please specify). Unit to be supplied with 3mm thick Stainless Steel wall fixing bracket and fitted in accordance with manufacturers specifications using 4 x 8mm anchor bolts (elsewhere measured).

Compliant with SABS 1733:1998 and SABS 497:1991 WC pan to flush with 4 and 6 litres of water. Pan to withstand point load of 400kg as per international standards. Optional seat available (please specify).

Flushing - WC pan to make provision for:

Top entry flushing provisions **or**

Back entry flushing **or**

Flushing with Geberit system (Please specify)

(Flushing mechanisms specified elsewhere)

CMPX594 - Back Entry	360x700x350	356114
CMPX594 - Top Entry	360x700x350	356174
CMPX594 Wlth Geberit Kombifix Concealed Cistern - Back Entry	360x700x350	825063
CMPX594* with Seat Holes to suit Estonia Seat *Back Entry Only	360X700X350	356122

Optional Toilet Seats available (Please specify) If required, seat must be specified with WC Pan

Estonia Soft Closing seat (black) or	356258
Estonia Soft Closing seat (white) or	356255

WATER CONSERVATION AND QUALITY ASSURANCE

Complies with SABS and LGA DIN EN International Standards.
Please refer to Page 4 for details.

AST1172 - Watermark Certification (Page 44)

* SEAT SOLD SEPARATELY

WC Pans, Squat Pans, Urinals & Showers

IMAGE	TYPE / MODEL	DIMENSIONS (L X D X H) mm	PRODUCT CODE
-------	--------------	---------------------------	--------------



Franke Bundle Pack With Concealed Cistern

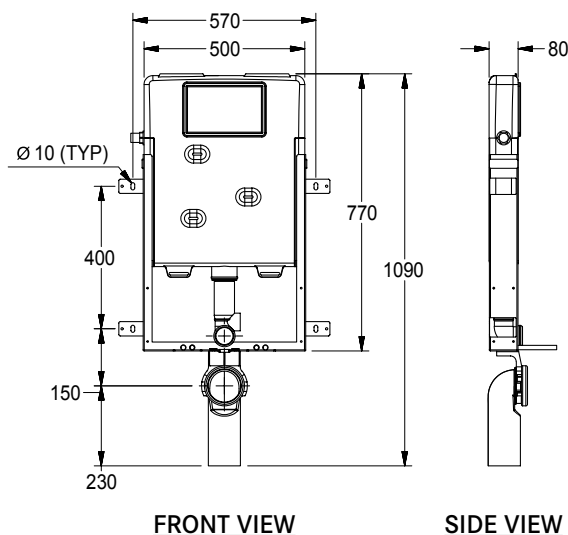
Kombifix

Kombifix is the solution created especially for solid wall constructions. Over the years Geberit Kombifix has proven itself as a very reliable system for pre-wall installations. It has good noise reduction qualities, the highest functional reliability and is designed to carry weights up to 400 kg.

Franke Bundle Pack CMPX...(please specify) with Geberit Kombifix UP172 concealed cistern with front actuation, 770x500x80mm depth. Installation height of 1090mm. Fastening for outlet bend pluggable. To be supplied complete with galvanised mounting frame with 4 fastening brackets. Water supply connection is at the top of the unit, connection hose to angle stop valve can be fixed without tools. Unit complete with 2 x threaded rods M12 for fastening, protection cover for service opening - polystyrene foam, angle stop valve R1/2" and plug adapter, outlet bend bracket, connector set \varnothing 90mm, WC outlet bend, PE-HD \varnothing 90/90mm, adapter sleeve, PE-HD \varnothing 90/110mm, 2 x protection plugs, fastening material and netting for direct plastering.

- Adjustable Volume Control
- Saving in household water consumption
- Silent filling valve
- For installation in a solid wall
- Complete with Delta15 Single Flush, Stainless Steel actuator plate
- Large flush volume can be set
- Cistern concealed in wall

KOMBIFIX



CMPX592 With Geberit Kombifix Cistern with Actuator - Back Entry	360x550x350	825064
---	-------------	---------------

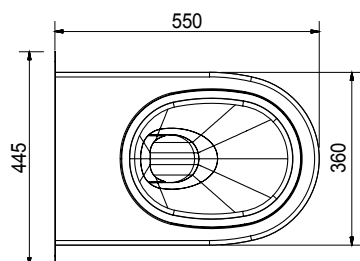
CMPX594 With Geberit Kombifix Concealed Cistern with Actuator - Back Entry	360x700x350	825063
---	-------------	---------------

Optional Toilet Seats available (Please specify)
If required, seat must be specified with WC Pan

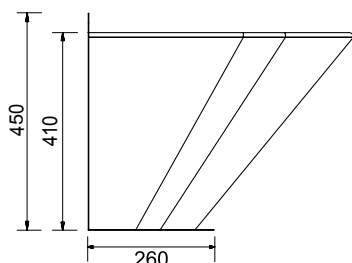
Estonia Soft Closing seat (black) or	356258
Estonia Soft Closing seat (white) or	356255

WC Pans, Squat Pans, Urinals & Showers

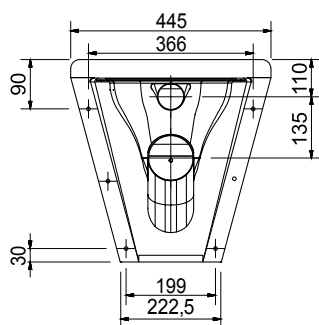
IMAGE	TYPE / MODEL	DIMENSIONS (L X D X H) mm	PRODUCT CODE
-------	--------------	---------------------------	--------------



TOP VIEW



FRONT VIEW



BACK VIEW

HDTX597 Wall and Floor Mounted Shroud Pan

Franke Model HDTX597 Heavy Duty Wall and Floor Mounted WC Pan 360x550x410mm high. Unit to be manufactured from Grade 304 (18/10) Stainless Steel 1,2mm gauge. Unit to be manufactured with a pressed flushing rim and integral "P" Trap with a 102mm outlet pipe and a 60mm back entry inlet pipe to suit a rubber flush inlet sealing bung. The pan to be manufactured with a shroud, with internal flanges for securing the pan through the wall and into floor with anchor bolts. (Bolts elsewhere measured).

Optional Extra:

Inlet and outlet pipes extended to 250mm.

- Grade 304 (18/10) Stainless Steel 1.2mm gauge
- Hygienic and vandal resistant
- Pressed components to ensure consistent quality and performance
- 4 or 6 litres flushing
- Heavy duty outer casing conceals the plumbing
- Pressed flushing rim
- Provision for secured fixing through wall and into floor
- Optional provision for seat or wooden slats
- Optional outlet and flush inlet pipes are available, which can be shortened/lengthened to suit plumbing
- Sub-assembly of pan is pickled and passivated to prevent corrosion

HDTX 597 with external flanges	360x550x450	356082
HDTX 597 with external flanges with 250 mm long extended pipes	360x550x450	356117
HDTX 597 with internal flanges (wall and floor)	360x550x450	356086
HDTX 597 with internal flanges with 250 mm long extended pipes	360x550x450	356118

Optional Toilet Seats available (Please specify)
If required, seat must be specified with WC Pan

Estonia Soft Closing seat (black) or	356258
Estonia Soft Closing seat (white) or	356255

WATER CONSERVATION AND QUALITY ASSURANCE

Complies with SABS and LGA DIN EN International Standards.
Please refer to Page 4 for details.

AST1172 - Watermark Certification (Page 44)

WC Pans, Squat Pans, Urinals & Showers

IMAGE	TYPE / MODEL	DIMENSIONS (L X D X H) mm	PRODUCT CODE
-------	--------------	---------------------------	--------------



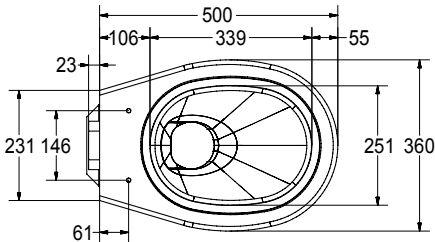
HCL Pedestal WC Pan

Franke Model HCL Pedestal WC Pan, unit to be manufactured from Grade 304 (18/10) Stainless Steel, 1,2mm gauge. Unit to be manufactured with a pressed flushing rim and integral “P” Trap with a 102mm outlet pipe, and a 60mm back entry inlet pipe to suit a rubber flush inlet sealing bung. The pan to be fitted with a Stainless Steel base which has flanges with 6mm holes for fixing the pan to the floor (bolts elsewhere measured).

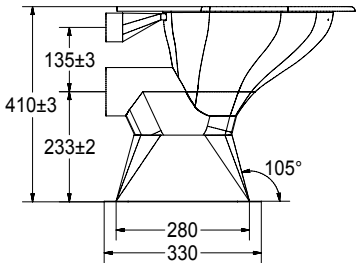
- Grade 304 (18/10) Stainless Steel, 1.2mm gauge
- Hygienic and vandal resistant
- Pressed components to ensure consistent quality and performance
- 4 or 6 litres flushing
- Optional provision for seat or wooden slats
- Sub-assembly of pan is pickled and passivated to prevent corrosion

Optional Flushing Systems:

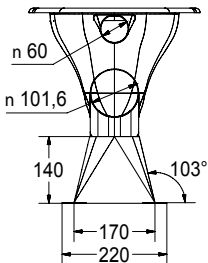
- Surface mounted or concealed Flush Valve
- High level Stainless Steel cistern with Supa Flush Valve and a 41mm diameter Stainless Steel flush pipe.
- Low level Stainless Steel cistern with Supa Flush Valve and PVC flush pipe.



TOP VIEW



FRONT VIEW



BACK VIEW

HCL Pan with Slats	360x500x429	356084
HCL Pan without Slats	360x500x429	356076

Optional Toilet Seats available (Please specify)
If required, seat must be specified with WC Pan

WATER CONSERVATION AND QUALITY ASSURANCE

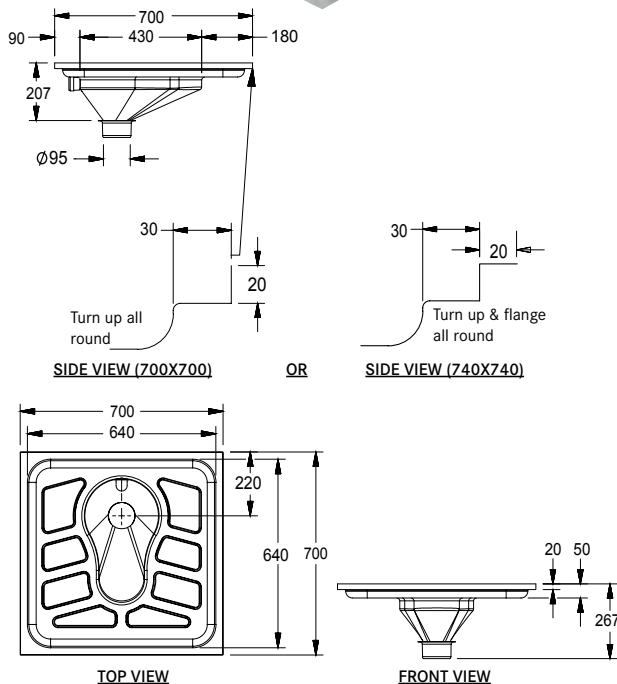
Complies with SABS and LGA DIN EN International Standards.
Please refer to Page 4 for details.

AST 1172 - Watermark Certification (Page 44)

Estonia Soft Closing seat (black) or	356258
Estonia Soft Closing seat (white) or	356255

WC Pans, Squat Pans, Urinals & Showers

IMAGE	TYPE / MODEL	DIMENSIONS (L X D X H) mm	PRODUCT CODE
-------	--------------	---------------------------	--------------



Squat Pans

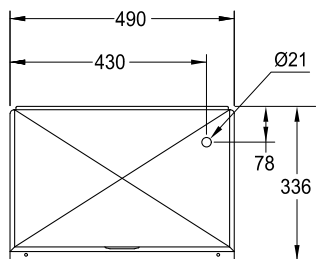
Franke Model 700x700mm OR 740x740mm... (please specify) Squat Pan. Unit to be manufactured from Grade 304 (18/10) Stainless Steel, 1.2 mm gauge with the foot plate and flush bowl pressed into one piece. The foot plate tray to be pressed in raised pattern on both sides and in front of the flush bowl. The unit to be fitted with a rear entry flushing spreader that will self seal with 38mm or 41mm flushing pipe (please specify), waste outlet with a 110mm external diameter, suitable for fitting to a standard 110mm PVC or cast iron waste connector.

- Grade 304 (18/10) Stainless Steel, 1.2mm gauge
- Hygienic pan cannot chip or crack
- Designed for the highest level of anti-vandal resistance
- Heavy duty construction external surfaces 1.2mm gauge
- Fully pressed design with raised tread plates
- Concealed back entry flush pipe inlet suitable for surface mounted or concealed flush valves, low or high level cisterns
- Supplied with flushing spreader
- Flushes with 9 Litres Low Level Cistern

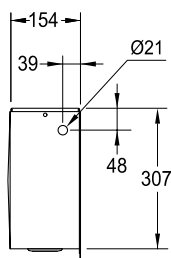
Optional Extras:

Also available with High level Stainless Steel cistern with Supa Flush Valve and 41mm diameter Stainless Steel flush pipe.

Squat Pan with 20 mm turn up all round	700x700	356014
Squat Pan with 20 mm turn up and flange all round	740x740	356013



FRONT VIEW



SIDE VIEW

Stainless Steel Cistern

Franke Model...(please specify) 11 Litre Cistern 490x336x150mm. Unit to be manufactured from Grade 304 (18/10) Stainless Steel. Low level cistern to be supplied complete with PVC flush pipe, supa flush valve and ball valve **OR** High level cistern supplied complete with supa flush valve with chain and ball valve...(please specify).

Optional Stainless Steel Flush Pipe 1700mm (please specify).

- Grade 304 (18/10) Stainless Steel
- Low or high level cistern.
- Low level cistern complete with PVC flush pipe and supa flush valve
- High level cistern complete with supa flush valve and chain
- 11 Litres high or low level cistern

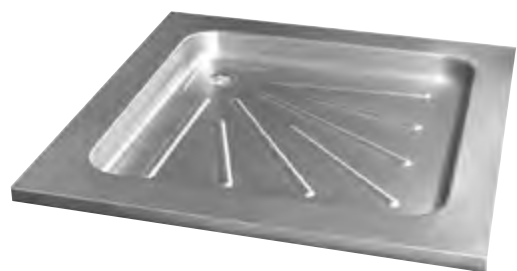
SCL Low Level Cistern complete with PVC flush pipe, Supa Flush Valve and Ball Valve	356005
SCH High Level Cistern with Supa Flush Valve with Chain & Ball Valve	356550

OPTIONAL EXTRAS

Supa Flush Valve for HLC (High Level Cistern) with chain	356600
--	---------------

WC Pans, Squat Pans, Urinals & Showers

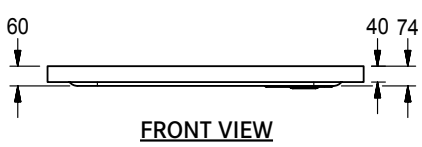
IMAGE	TYPE / MODEL	DIMENSIONS (L X D X H) mm	PRODUCT CODE
-------	--------------	---------------------------	--------------



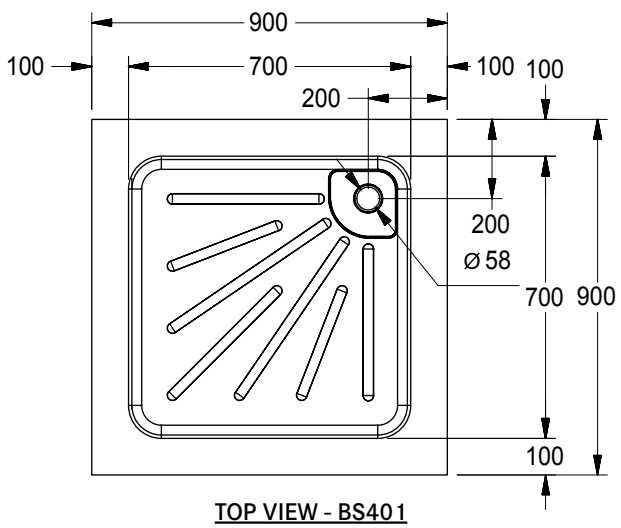
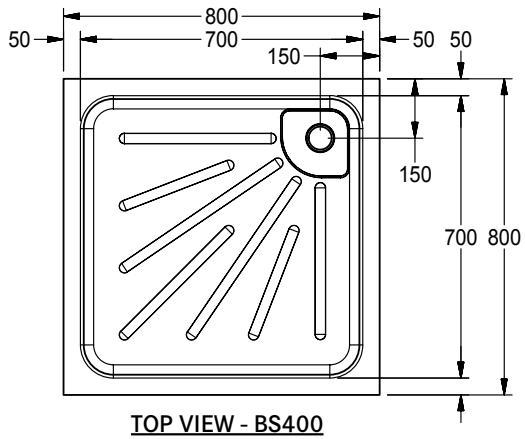
BS Shower Trays

Franke Model BS400 (800x800x75mm deep) OR BS401 (900x900x75mm deep)...(please specify), 75mm deep Pressed Shower Tray. Manufactured from Grade 304 (18/10) Stainless Steel, 1.2mm gauge. Unit with radiused corners and a patterned base, with 40mm apron all round and 38mm BSP integrated waste outlet. (Waste fitting elsewhere measured).

- Grade 304 (18/10) Stainless Steel 1,2mm gauge
- Hygienic cannot chip or crack
- Designed for the highest level of anti vandal resistance
- Radiused internal corners for easy cleaning
- One piece pressed seamless design with raised surface
- Built-in fall to 38mm BSP grated waste outlet in corner position

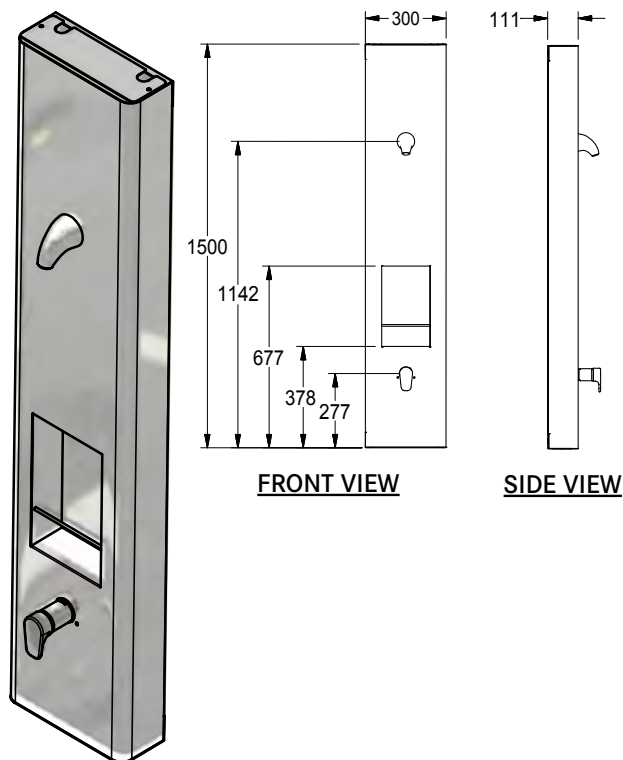


BS400	800x800x75	359996
BS401	900x900x75	359995



WC Pans, Squat Pans, Urinals & Showers

IMAGE	TYPE / MODEL	DIMENSIONS (L X D X H) mm	PRODUCT CODE
-------	--------------	---------------------------	--------------



FRONT VIEW

SIDE VIEW

Shower Panels - Wall Mounted & Recessed

WALL MOUNTED

Franke Wall Mounted Shower Panel 1500x300x111mm. Unit to be manufactured from Grade 304 (18/10) Stainless Steel ,1,2 mm gauge. To be complete with radiused corners and a recessed storage shelf in the front panel with a front rail. Unit to be manufactured with holes to accommodate the mixer/tap (please specify) and shower rose (please specify). (Fittings elsewhere measured)

RECESSED

Franke Recessed Shower Panel 1485x322x45mm. Unit to be manufactured from Grade 304 (18/10) Stainless Steel ,1,2 mm gauge. To be complete with angled corners and a recessed storage shelf in the front panel with a front rail. Unit to be manufactured with holes to accommodate the mixer/tap (please specify) and shower rose (please specify). (Fittings elsewhere measured)

- Grade 304 (18/10) Stainless Steel 1,2mm gauge
- Wall mounted with recessed plumbing connections
- Provision for Shower Rose and Mixer. (Items sold separately)
- Recessed storage shelf for soap or shampoo

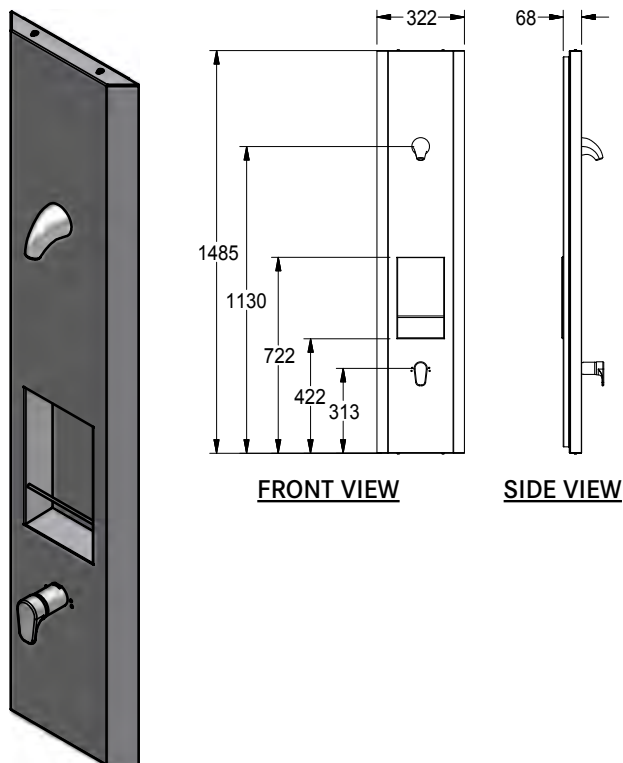
Wall Mounted Shower Panel*	1500x300x111	359610
----------------------------	--------------	---------------

Recessed Shower Panel*	1485x322x68	359611
------------------------	-------------	---------------

* SHOWER ROSE AND MIXER SOLD SEPARATELY

WALL MOUNTED

SHOWER ROSE AND MIXER SOLD SEPARATELY




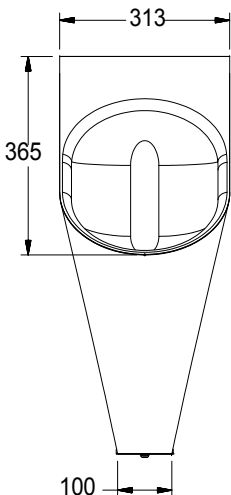
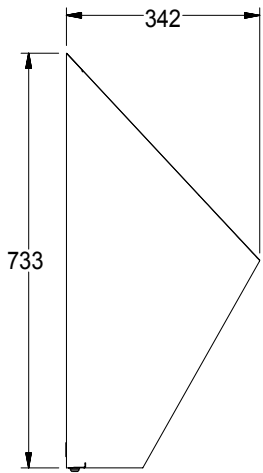
FRONT VIEW

SIDE VIEW

RECESSED

SHOWER ROSE AND MIXER SOLD SEPARATELY

WC Pans, Squat Pans, Urinals & Showers

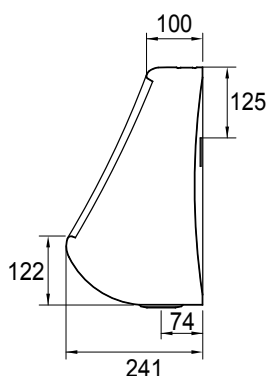
IMAGE	TYPE / MODEL	DIMENSIONS (L X D X H) mm	PRODUCT CODE
	CMPX538 Wall Hung Urinal - Back or Top Entry Flushing		
 <p>FRONT VIEW</p>	BACK ENTRY Franke Model CMPX538 Back entry single wall mounting urinal, 313 x 732 x 341mm with a pressed oval bowl. Unit to be manufactured from Grade 304 (18/10) Stainless Steel. Unit to be complete with 40mm waist outlet with a pressed perforated Stainless Steel grid and chrome plated button spreader with a 15mm coupling to connect to water supply. Unit to be mounted to the wall using a 1.2mm Stainless Steel bracket. Unit to be secured using rawl bolts. (bolts elsewhere measured)		
 <p>SIDE VIEW</p>	TOP ENTRY Franke Model CMPX538 Top entry single wall mounting urinal, 313 x 732 x 341mm with a pressed oval bowl. Unit to be manufactured from Grade 304 (18/10) Stainless Steel. Unit to be complete with 40mm waist outlet with a pressed perforated Stainless Steel grid and chrome plated button spreader with a 15mm coupling to connect to water supply. Unit to be mounted to the wall using a 1.2mm Stainless Steel bracket. Unit to be secured using rawl bolts. (bolts elsewhere measured)		
	<ul style="list-style-type: none">- Heavy duty construction Grade 304 (18/10) Stainless Steel 1.2mm thick- Hygienic cannot chip or crack- Pressed bowl with a bright polished finish on outside- Aesthetically appealing – matches any decor- Available in two models: Top Entry and Back Entry- Easy to Install Surface Mounting		
	CMPX538 (Back Entry)	313x733x342	333258
	CMPX538 (Top Entry)	313x733x342	333259

WC Pans, Squat Pans, Urinals & Showers

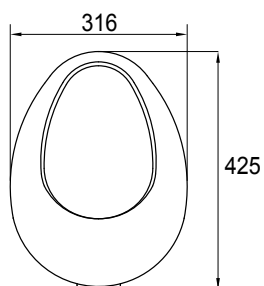
IMAGE	TYPE / MODEL	DIMENSIONS (L X D X H) mm	PRODUCT CODE
-------	--------------	---------------------------	--------------



TOP ENTRY
FLUSH VALVE, BOTTLE TRAP & FITTINGS NOT INCLUDED



SIDE VIEW



FRONT VIEW

Barron Bowl Urinal

BACK ENTRY

Franke Model SBE (Back Entry Inlet) Barron Bowl Urinal, 316x425x241mm. Unit to be manufactured from Grade 304 (18/10) Stainless Steel, 1,2mm gauge. Unit to be complete with 40mm waste outlet with a pressed perforated Stainless Steel grid and a chrome plated button spreader with a 15mm coupling to connect to water supply. Bowl to be fitted with a 2mm thick mounting plate with two key hole slots for mounting the unit to the wall. (Bolts elsewhere measured).

TOP ENTRY

Franke Model TE (Top Entry Inlet) Barron Bowl Urinal, 316x425x241mm. Unit to be manufactured from Grade 304 (18/10) Stainless Steel, 1,2mm gauge. Unit to be complete with 40mm waste outlet with a pressed perforated Stainless Steel grid and a chrome plated button spreader with a 15mm coupling to connect to water supply. Bowl to be fitted with a 2mm thick mounting plate with two key hole slots for mounting the unit to the wall. (Bolts elsewhere measured).

- Grade 304 (18/10) Stainless Steel, 1.2mm gauge
- Heavy duty construction, hygienic cannot chip or crack
- Pressed bowl with a bright polished finish on exterior
- Aesthetically appealing – matches any decor
- Available in two models: Top Entry and Back Entry
- Easy to Install Surface Mounting

Recommended Fittings

Model TE (Top Entry): Flush Valve Specification

Cobra Junior Flushmaster ref FJ6.000

Tailpipe: Cobra ref FJT 5.5

Model BE (Back Entry): Flush Valve Specification

Cobra Junior Flushmaster ref FJ8.102 (concealed type with palm press push-button)

Important: Kindly refer to Cobra regarding water pressure and flow.

BE (Back Entry)	316x425x241	333200
TE (Top Entry)	316x425x241	333250
Waterless	316x425x241	333251

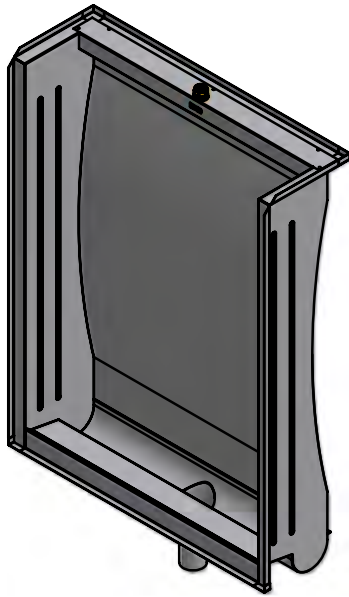
Optional:

Waterless Waste Fitting	333220
-------------------------	---------------

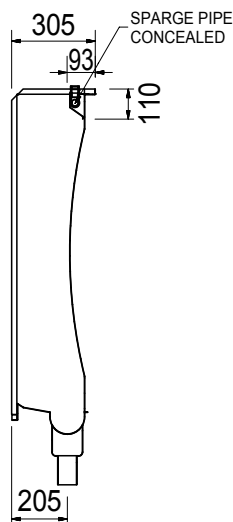
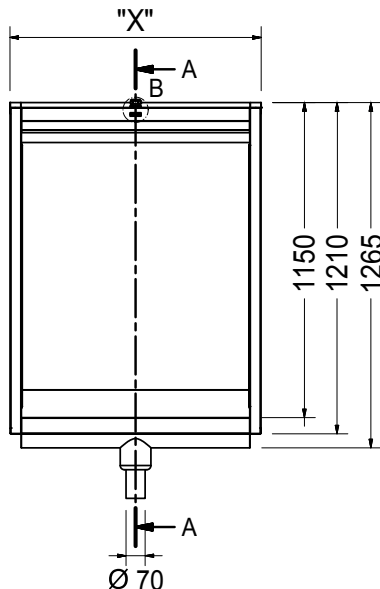
* FLUSH VALVE, BOTTLE TRAP & FITTINGS NOT INCLUDED

WC Pans, Squat Pans, Urinals & Showers

IMAGE	TYPE / MODEL	DIMENSIONS	PRODUCT CODE
-------	--------------	------------	--------------



CB101



Urinals: CB101: Flush Valve / Cistern

Franke Model CB101 (flush valve/cistern) curved back urinal length... mm (please specify). Unit to be manufactured from Grade 304 (18/10) Stainless Steel. The urinal to be supplied with a concealed sparge pipe and a 22mm inlet with chrome plated conex fitting for connecting to high level cistern or urinal flush valve (elsewhere measured). Outlet to be situated on the left, or right, or centre (please specify) of the urinal with a 102mm removable domical grating and to include a built-in threaded plate. Urinal to be supplied with a tiling key to the sides and rear walls. The back to be fully sound deadened with vermin proof bitumastic material.

- Manufactured from 304(18/10) Stainless Steel
- Back of urinal fully sound deadened
- Sides and top complete with tiling key.
- For use with flush valve or high level cistern
- Concealed sparge pipe
- Supplied with a 70mm outlet
- Recessed Stainless Steel domical grating
- Free standing ends where end plate is exposed
- Sloped drip ledge for hygiene
- Standards lengths of 610 - 2440mm

Non Standard Wall & Floor Urinals (Available on request)

"L" Shaped Urinal:

Franke Model CB101 or CB102 "L" Shaped curve back urinal length (... x...) (please specify) manufactured from Grade 304 (18/10) Stainless Steel. Unit will be supplied with one welded corner an easy assembly joint with sealing strip (as recommended).

"U" Shaped Urinal:

Franke Model CB101 or CB102 "U" Shaped curve back urinal length (... x ... x ...) (please specify) manufactured from Grade 304 (18/10) Stainless Steel. Unit will be supplied with two welded corners an easy assembly joints with sealing strip (as recommended).

Welded Corner:

All the right angled corners on "L" and "U" shaped urinals will be manufactured with welded joints to ensure the fall in the trough is maintained and the drainage to the outlet is accurate.

Easy Assembly Joint:

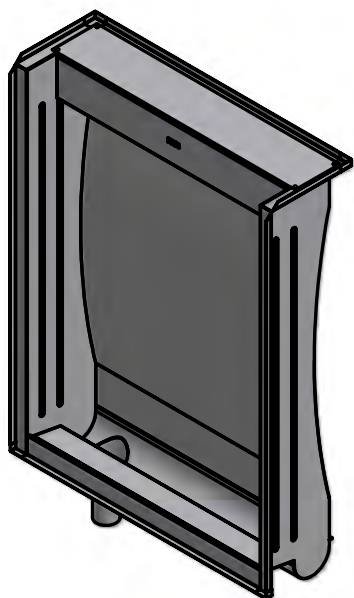
For ease of installation and transportation on lengths over 3000mm and for "L" and "U" shaped urinals. Urinals are manufactured in two sections and bolted together on site with an easy assembly joint. This joint will be sealed with a neoprene rubber sealing strip supplied with the urinal.

CB101 (1 Inlet / Centre Outlet)	610mm	330150
CB101 (1 Inlet / Centre Outlet)	915mm	330450
CB101 (1 Inlet / Centre Outlet)	1220mm	330750
CB101 (1 Inlet / Centre Outlet)	1525mm	331050
CB101 (1 Inlet / Right Hand Outlet)	1830mm	331250
CB101 (1 Inlet / Left Hand Outlet)	1830mm	331300
CB101 (1 Inlet / Centre Outlet)	1830mm	331350
CB101 (2 Inlet / Left Hand Outlet)	2135mm	331501
CB101 (2 Inlet / Right Hand Outlet)	2135mm	331502
CB101 (2 Inlet / Centre Outlet)	2135mm	331503
CB101 (2 Inlet / Right Hand Outlet)	2440mm	331550
CB101 (2 Inlet / Left Hand Outlet)	2440mm	331600
CB101 (2 Inlet / Centre Outlet)	2440mm	331650

* **Non Standard sizes available on request**
Fittings not included

WC Pans, Squat Pans, Urinals & Showers

IMAGE	TYPE / MODEL	DIMENSIONS	PRODUCT CODE
-------	--------------	------------	--------------



CB102

Urinals: CB102: Autoflush

Franke Model CB102 (automatic flushing) curved back urinal length...mm (please specify). Unit to be manufactured from Grade 304 (18/10) Stainless Steel. Urinal to be supplied with built-in tipping tank and a 12mm adjustable drip cock (inlet) which controls the automatic flushing of the urinal at regular intervals. Outlet to be situated on the left, or right, or centre (please specify) of the urinal with a 102mm removable domical grating and to include a built in threaded plate. The urinal to be supplied with a tiling key to the sides and rear walls. The back to be fully sound deadened with vermin proof bitumastic material.

- Manufactured from 304(18/10) Stainless Steel
- Back of urinal fully sound deadened
- Sides and top complete with tiling key.
- Built-in tipping tank
- 12mm adjustable drip cock (inlet)
- Supplied with a 70mm outlet
- Recessed Stainless Steel domical grating
- Free standing ends where end plate is exposed
- Sloped drip ledge for hygiene
- Standards lengths of 610 - 2440mm

Non Standard Wall & Floor Urinals (Available on request)

"L" Shaped Urinal:

Franke Model CB101 or CB102 "L" Shaped curve back urinal length (... x...) (please specify) manufactured from Grade 304 (18/10) Stainless Steel. Unit will be supplied with one welded corner an easy assembly joint with sealing strip (as recommended).

"U" Shaped Urinal:

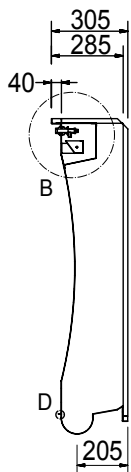
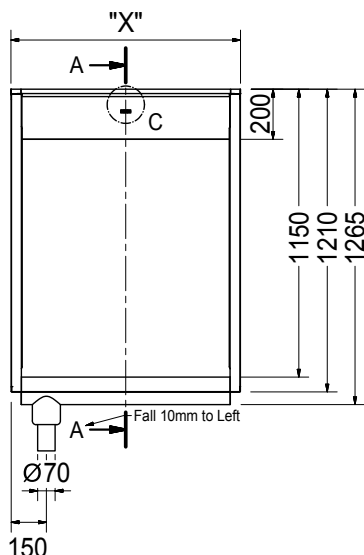
Franke Model CB101 or CB102 "U" Shaped curve back urinal length (... x ...) (please specify) manufactured from Grade 304 (18/10) Stainless Steel. Unit will be supplied with two welded corners an easy assembly joints with sealing strip (as recommended).

Welded Corner:

All the right angled corners on "L" and "U" shaped urinals will be manufactured with welded joints to ensure the fall in the trough is maintained and the drainage to the outlet is accurate.

Easy Assembly Joint:

For ease of installation and transportation on lengths over 3000mm and for "L" and "U" shaped urinals. Urinals are manufactured in two sections and bolted together on site with an easy assembly joint. This joint will be sealed with a neoprene rubber sealing strip supplied with the urinal.

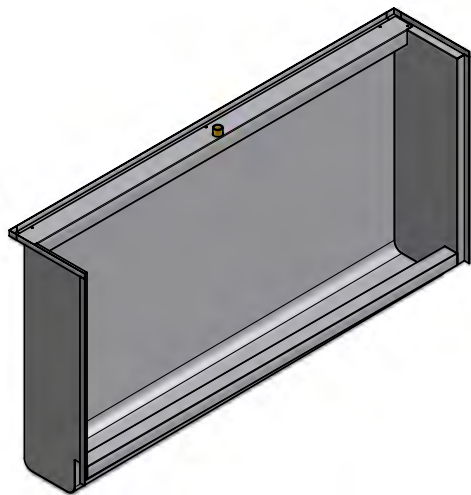


CB102 (1 Inlet / Centre Outlet)	610mm	331800
CB102 (1 Inlet / Centre Outlet)	915mm	332100
CB102 (1 Inlet / Centre Outlet)	1220mm	332400
CB102 (1 Inlet / Centre Outlet)	1525mm	332700
CB102 (1 Inlet / Right Hand Outlet)	1830mm	332900
CB102 (1 Inlet / Left Hand Outlet)	1830mm	332950
CB102 (1 Inlet / Centre Outlet)	1830mm	333000
CB102 (1 Inlet / Left Hand Outlet)	2135mm	333151
CB102 (1 Inlet / Right Hand Outlet)	2135mm	333152
CB102 (1 Inlet / Centre Outlet)	2135mm	333153
CB102 (1 Inlet / Right Hand Outlet)	2440mm	333158
CB102 (1 Inlet / Left Hand Outlet)	2440mm	333157
CB102 (1 Inlet / Centre Outlet)	2440mm	333159

* Non Standard sizes available on request
Fittings not included

WC Pans, Squat Pans, Urinals & Showers

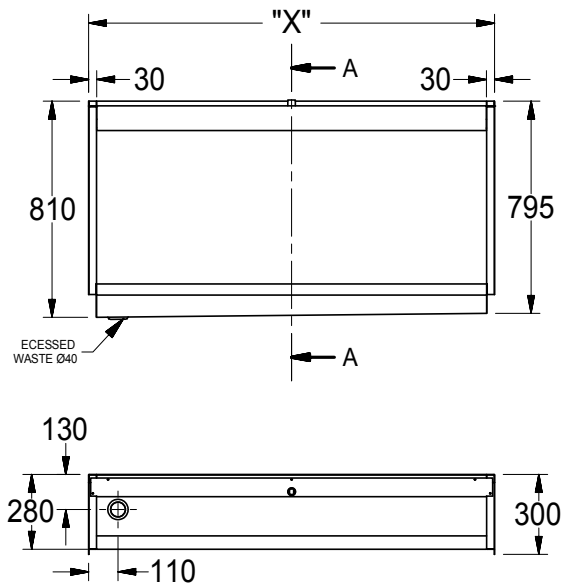
IMAGE	TYPE / MODEL	DIMENSIONS	PRODUCT CODE
-------	--------------	------------	--------------



Trough Urinals: TU101 (Flush Valve / Cistern)

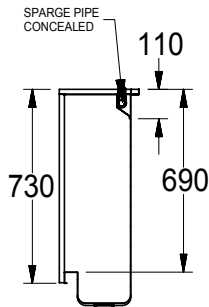
Franke Model TU101 flat back wall mounted Trough Urinal, length ... mm (please specify). Unit to be manufactured from Grade 304 (18/10) Stainless Steel, 0,9mm gauge. Urinal to be supplied with a concealed sparge pipe and a 22mm inlet with chrome plated conex fitting for connecting to the high level cistern or urinal flush valve (elsewhere measured). Outlet to be situated on the left or right... (please specify) of the urinal with a recess for 40mm chrome plated waste outlet (to be supplied). Urinal to include a tiling key to sides and rear walls. The back to be fully sound deadened with vermin proof bitumastic material.

- Manufactured from Grade 304 (18/10) Stainless Steel
- Back of urinal fully sound deadened
- Sides and top complete with tiling key.
- For use with flush valve or high level cistern
- Concealed sparge pipe
- Free standing ends where end plate is exposed
- Left or right outlets (provision for 40mm waste outlet)
- Standard lengths of 610 to 1830mm



TU101 (1 Inlet / Left Hand Outlet)	610mm	334452
TU101 (1 Inlet / Right Hand Outlet)	610mm	334370
TU101 (1 Inlet / Left Hand Outlet)	915mm	334458
TU101 (1 Inlet / Right Hand Outlet)	915mm	334371
TU101 (1 Inlet / Left Hand Outlet)	1220mm	334465
TU101 (1 Inlet / Right Hand Outlet)	1220mm	334372
TU101 (1 Inlet / Left Hand Outlet)	1525mm	334472
TU101 (1 Inlet / Right Hand Outlet)	1525mm	334373
TU101 (1 Inlet / Left Hand Outlet)	1830mm	334478
TU101 (1 Inlet / Right Hand Outlet)	1830mm	334374

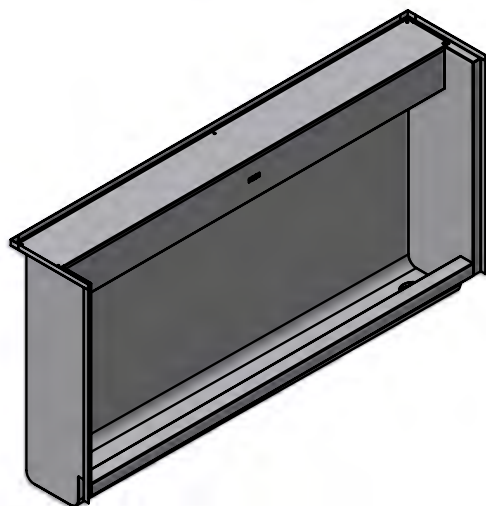
* Non Standard sizes available on request
Fittings not included



WC Pans, Squat Pans, Urinals & Showers

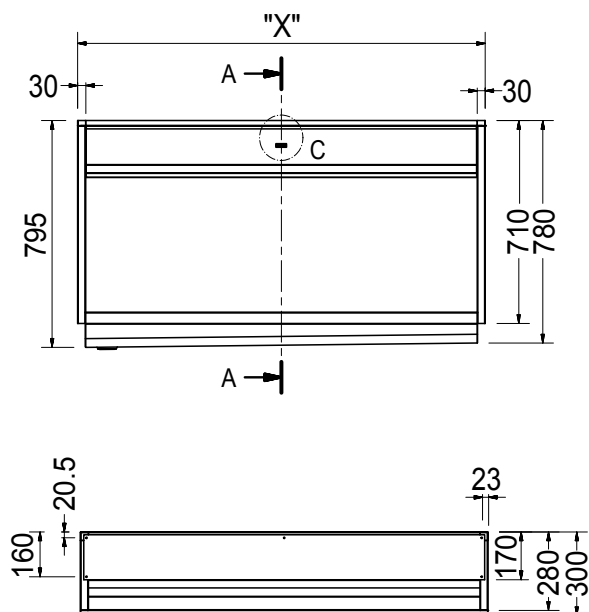
IMAGE	TYPE / MODEL	DIMENSIONS	PRODUCT CODE
-------	--------------	------------	--------------

Trough Urinals: TU102 (Autoflush)



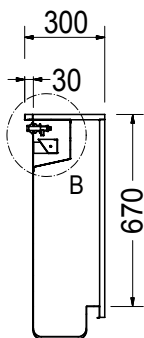
Franke Model TU102 flat back wall mounted Trough Urinal, length ... mm (please specify). Unit to be manufactured from Grade 304 (18/10) Stainless Steel, 0,9mm gauge. Urinal to be supplied with built-in tipping tank and a 12mm adjustable drip cock (inlet) which controls the automatic flushing of the urinal at regular intervals. Outlet to be situated on the left or right ... (please specify) of the urinal with a recess for a 40mm chrome plated waste outlet (to be supplied). Urinal to include a tiling key to sides and rear walls. The back to be fully sound deadened with vermin proof bitumastic material.

- Manufactured from Grade 304 (18/10) Stainless Steel
- Back of urinal fully sound deadened
- Sides and top complete with tiling key.
- Built-in tipping tank
- 12mm adjustable drip cock (inlet)
- Free standing ends where end plate is exposed
- Left or right outlets (provision for 40mm waste outlet)
- Standard lengths of 610 to 1830mm



TU102 (1 Inlet / Left Hand Outlet)	610mm	334482
TU102 (1 Inlet / Right Hand Outlet)	610mm	334380
TU102 (1 Inlet / Left Hand Outlet)	915mm	334486
TU102 (1 Inlet / Right Hand Outlet)	915mm	334381
TU102 (1 Inlet / Left Hand Outlet)	1220mm	334490
TU102 (1 Inlet / Right Hand Outlet)	1220mm	334382
TU102 (1 Inlet / Left Hand Outlet)	1525mm	334494
TU102 (1 Inlet / Right Hand Outlet)	1525mm	334383
TU102 (1 Inlet / Left Hand Outlet)	1830mm	334498
TU102 (1 Inlet / Right Hand Outlet)	1830mm	334384

* Non Standard sizes available on request
Fittings not included







Wash Hand Basins

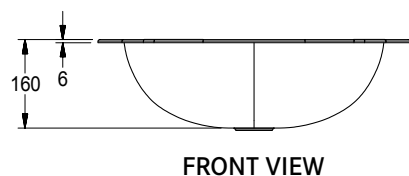
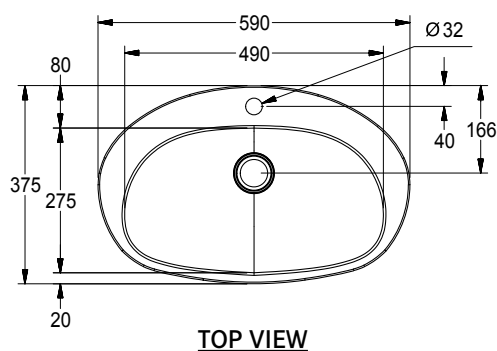
Public ablutions are subjected to heavy usage and vandalism and yet, they have to look aesthetically pleasing at all times. Franke offer a wide range of basins to suit different applications that range from upmarket shopping centres, to heavy duty industrial applications.

Various Designs for Different Applications:

- Inset or undermount models
- Standard wall mounted
- Single or extended versions (ranges of basins)
- Heavy duty

Wash Hand Basins

IMAGE	TYPE / MODEL	DIMENSIONS (L X D X H) mm	PRODUCT CODE
-------	--------------	---------------------------	--------------



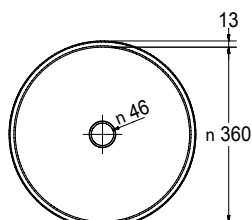
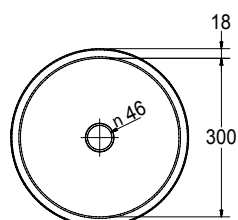
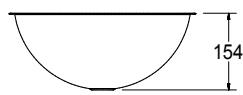
Oval V - Inset Vanity Basins

Franke Model Oval V inset vanity basin , 590x375x160mm. Unit to be manufactured from a high grade austenitic Stainless Steel, 0,8mm gauge. Bowl size 490x275x160mm deep with 40mm waste outlet and overflow hole, tap ledge including a 32mm tap hole. The underside of the basin to include Stainless Steel lugs for mounting the unit to the worktop.

- Basin one pieced pressed
- Hygienic and vandal resistant
- High grade austenitic Stainless Steel

Oval A 590x375x160 **357457**

* TAP & WASTE FITTING NOT INCLUDED



RONDO 300

RONDO 360

Rondo 300 & 360 - Inset / Undermount Vanity Basins

Franke Model... (please specify) inset vanity basin. Unit to be manufactured from Grade 304 (18/10) Stainless Steel. Bowl size 300mm diameter x 154mm deep with 18mm flange or... 360mm diameter x 158mm deep with 12.5mm flange. Both with 40mm waste outlet and overflow hole. Basin to be fitted as an inset or undermount (please specify).

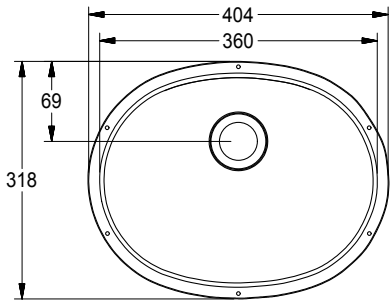
- Grade 304 (18/10) polished Stainless Steel
- Basin one pieced pressed
- Hygienic and vandal resistant
- Inset or undermount
- The basin is designed for surface or under mounting installations

RONDO300 with 40mm waste 300mm ø **820075**

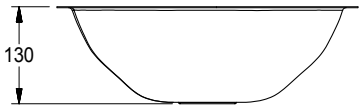
RONDO360 with 40mm waste 360mm ø **820074**

* TAP & WASTE FITTING NOT INCLUDED

IMAGE	TYPE / MODEL	DIMENSIONS (L X D X H) mm	PRODUCT CODE
-------	--------------	---------------------------	--------------



TOP VIEW



FRONT VIEW

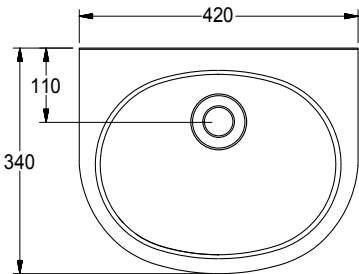
Undermount Hand Wash Basin

Franke Undermount Wash Hand Basin, 404x318x130mm. Unit to be manufactured from Grade 304 (18/10) Stainless Steel, 1,2mm gauge. Bowl size 360x280x130mm deep with a 22mm flanges all round and 40mm waste outlet.

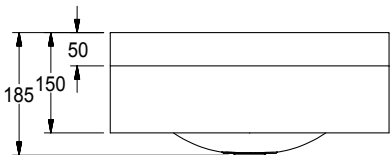
- Grade 304 (18/10) polished Stainless Steel, 1,2mm gauge
- Basin one pieced pressed
- Hygienic and vandal resistant
- The basin is designed for under mounting installations

Undermount Hand Wash Basin	404x316x130	325304
----------------------------	-------------	--------

* TAP & WASTE FITTING NOT INCLUDED



TOP VIEW



FRONT VIEW

Oval A - Wall Mounted Wash Hand Basin

Franke Model Oval A Wash Hand Basins, 420x340x185mm deep. Unit to be manufactured from Grade 304 (18/10) Stainless Steel, 1,2mm gauge. Unit to include a one piece pressed bowl, 360x280x130mm deep with a 40mm waste outlet, with a 50mm splashback and 100mm radiused apron. Basin to be fixed to the wall with 4 x 6mm anchor bolts (bolts elsewhere measured).

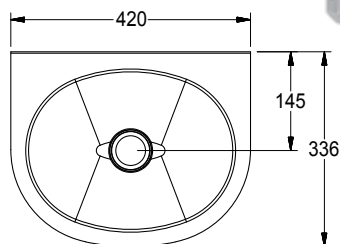
- Grade 304 (18/10) polished Stainless Steel, 1,2mm gauge
- Compact design suitable for wall mounting
- Basin with pressed bowl
- No brackets required, basin supplied with mounting plates
- Hygienic and vandal resistant

Oval A Wall Mounted Wash Hand Basin	420x340x185	357456
-------------------------------------	-------------	--------

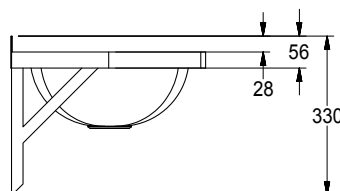
* TAP & WASTE FITTING NOT INCLUDED

Wash Hand Basins

IMAGE	TYPE / MODEL	DIMENSIONS (L X D X H) mm	PRODUCT CODE
-------	--------------	---------------------------	--------------



TOP VIEW



FRONT VIEW

Oval B - Wall Mounted Wash Hand Basin

Franke Model Oval B Wash Hand Basins, 420x336x130mm deep. Unit to be manufactured from Grade 304 (18/10) Stainless Steel, 1,2mm gauge. Unit to include a one piece pressed bowl, 360x280x130mm deep with a 40mm waste outlet, with a 30mm splash back and 30mm radiused apron. Basin to be supplied with 20x20mm square mild steel (galvanised brackets) or Stainless Steel gallow brackets (optional, please specify). Basin to be fixed to the wall with 4 x 6mm anchor bolts (bolts elsewhere measured).

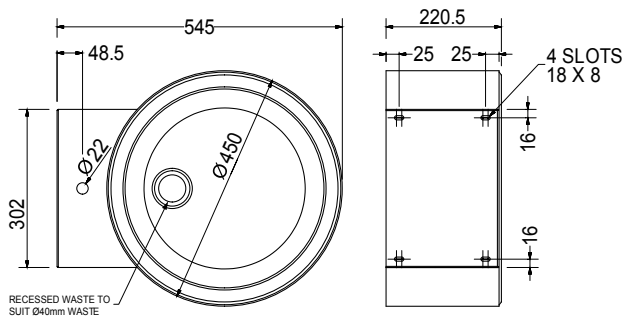
- Grade 304 (18/10) polished Stainless Steel, 1,2mm gauge
- Compact design suitable for wall surface mounting
- Basin with pressed bowl
- Hygienic and vandal resistant

Optional Extras: (Please Specify)

- One or two tap holes punched
- Brackets in Stainless Steel or mild steel galvanised

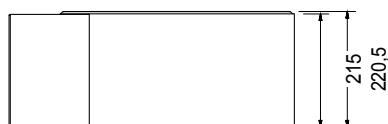
Oval B - Basin only	420x336x168	357455
Oval B - Basin with mild steel galvanised brackets	420x336x330	357451
Oval B - Basin with stainless steel brackets	420x336x330	357454

- * TAP & WASTE FITTING NOT INCLUDED
- * TAP HOLES TO BE SPECIFIED



TOP VIEW

SIDE VIEW



FRONT VIEW

Rondo WM Wall Mounted Wash Hand Basin

Franke Model Rondo WM Wall Mounted Wash Hand Basin 450 x 545 x 220 mm. Manufactured from Grade 304 (18/10) Stainless Steel. 1,2mm gauge back plate and surround. Pressed Bowl size 380 diameter x 160 mm deep with a 40 mm waste outlet. The basin is secured to the wall using 4 x 8mm anchor bolts (elsewhere measured)

The rounded feature is unique and ideally suited for public ablutions where sharp corners should be avoided.

- Grade 304 (18/10) polished Stainless Steel
- Heavy duty construction external surfaces of 1.2mm gauge
- Basin with pressed bowl
- Hygienic and vandal resistant

Rondo Wash Hand Basin	545x450x220.5	362964
-----------------------	---------------	---------------

- * TAP & WASTE FITTING NOT INCLUDED
- * TAP HOLES TO BE SPECIFIED

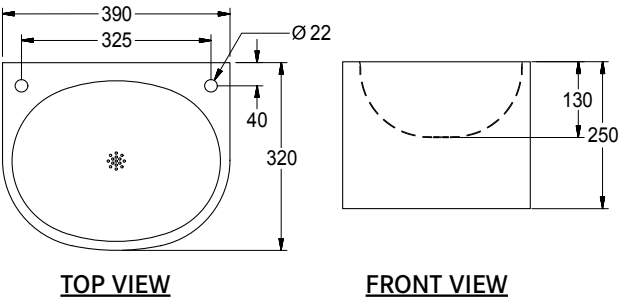
IMAGE	TYPE / MODEL	DIMENSIONS (L X D X H) mm	PRODUCT CODE
-------	--------------	---------------------------	--------------



FSW - Heavy Duty Surround Wall Mounted Wash Hand Basin

Franke Model... (please specify) Surround Wall Mount Basin, available without splashback (Model FSW) 390x320x250mm. Unit to be manufactured from Grade 304 (18/10) Stainless Steel, 1.2mm gauge in a satin finish. Unit to include a pressed bowl 360x320x130 mm deep with a 40mm waste outlet and a polished outer casing with a removable base plate. Basin to be supplied with two 25 x 6mm fixing brackets to secure the basin to the wall. Fixing bracket fixed to the wall with 4 x 6mm anchor bolts (bolts elsewhere measured).

- Grade 304 (18/10) polished Stainless Steel
- Heavy duty construction external surfaces of 1.2mm gauge
- Basin with pressed bowl
- Hygienic and vandal resistant
- 150mm splashback with tap holes (FSWSB Model)
- Provision for secured fixing to wall
- Concealed plumbing with removable base plate



FSW - Basin only	390x322x262	325306
------------------	-------------	---------------

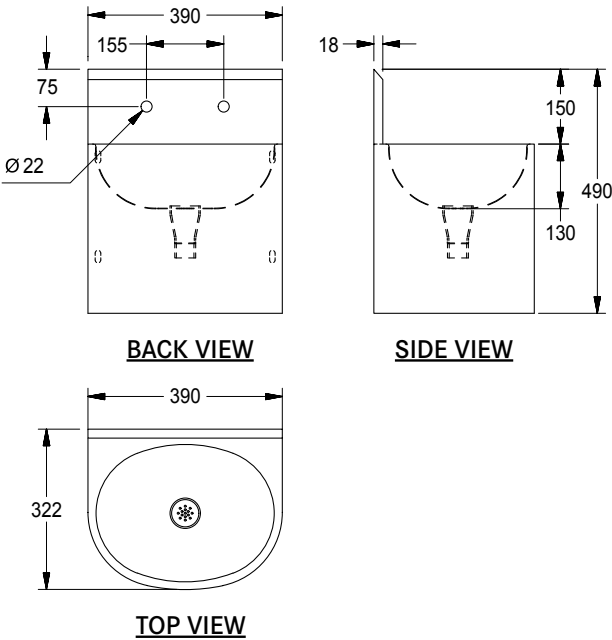
- * TAP & WASTE FITTING NOT INCLUDED
- * TAP HOLES TO BE SPECIFIED



FSWSB - Heavy Duty Surround Wall Mounted Wash Hand Basin

Franke Model... (please specify) Surround Wall Mount Basin, available with a 150mm splashback (Model FSWSB). Unit to be manufactured from Grade 304 (18/10) Stainless Steel, 1.2mm gauge in a satin finish. Unit to include a pressed bowl 360x320x130 mm deep with a 40mm waste outlet and a polished outer casing with a removable base plate. Basin to be supplied with two 25 x 6mm fixing brackets to secure the basin to the wall. Fixing bracket fixed to the wall with 4 x 6mm anchor bolts (bolts elsewhere measured).

- Grade 304 (18/10) polished Stainless Steel
- Heavy duty construction external surfaces of 1.2mm gauge
- Basin with pressed bowl
- Hygienic and vandal resistant
- 150mm splashback with tap holes (FSWSB Model)
- Provision for secured fixing to wall
- Concealed plumbing with removable base plate



FSWSB - Basin with splash back	390x322x490	325307
--------------------------------	-------------	---------------

- * TAP & WASTE FITTING NOT INCLUDED
- * TAP HOLES TO BE SPECIFIED

Wash Hand Basins

WASH HAND
BASINS

IMAGE	TYPE / MODEL	DIMENSIONS (L X D X H) mm	PRODUCT CODE
-------	--------------	---------------------------	--------------



WB001 - Wall Mounted Wash Hand Basin

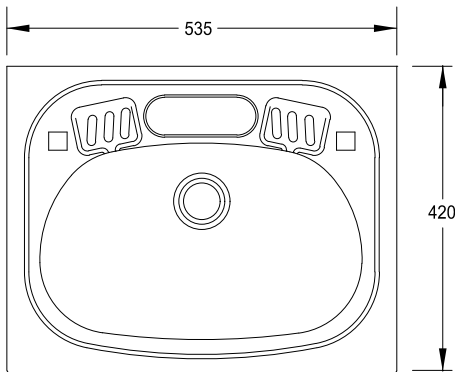
Franke Model WB001 Wash Hand Basin, 535x420x150mm deep. Unit to be manufactured from a high grade austenitic Stainless Steel, 0,8mm gauge. Basin to include a pressed bowl 410x300x140mm deep with a 40mm waste outlet and 32mm apron all round. Unit to be fixed to wall with pair of galvanised mild steel Eagle Brackets (Optional - please specify).

- Basin one pieced pressed
- Hygienic and vandal resistant
- Available with optional tiling key
- High grade austenitic Stainless Steel
- Semi-pierced tap holes and soap recessors

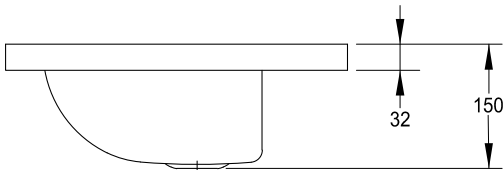
Optional Tiling Key (please specify)

WB001 - Basin only	535x420x150	325150
WB001 - Basin with tiling key	535x420x150	325000

* TAP & WASTE FITTING NOT INCLUDED



TOP VIEW



FRONT VIEW

Eagle Brackets

Franke Model Eagle Brackets 408x319mm to be manufactured from galvanised mild steel with two 6mm holes to secure the unit to the wall. (Bolts elsewhere measured).

Eagle Brackets	408x285	300351
----------------	---------	---------------

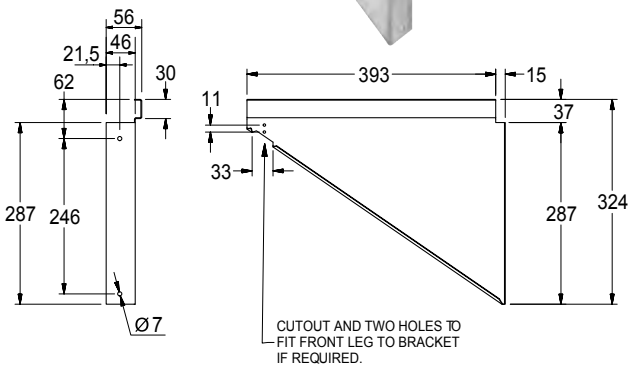


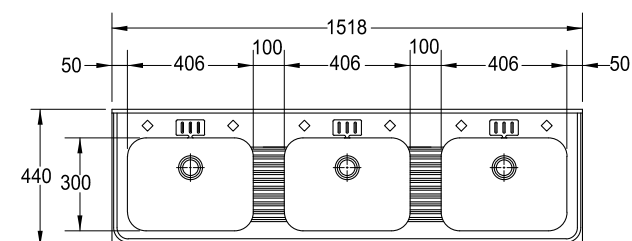
IMAGE	TYPE / MODEL	DIMENSIONS (L X D X H) mm	PRODUCT CODE
-------	--------------	---------------------------	--------------



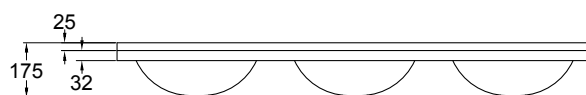
WB Range - Wall Mounted Wash Hand Basins

Franke Model WB... (please specify) range of wash hand basins. Unit to be manufactured in Grade 304 (18/10) Stainless Steel, 0,9mm gauge with 25mm splashback and tiling key. Unit to include pressed bowls, 406x300x140mm deep with a 40mm waste outlets. Basin to be supplied with gallows brackets **OR** gallows brackets and front legs with adjustable foot piece (optional, please specify). Brackets to be fixed to the wall with anchor bolts (bolts elsewhere measured)

- Grade 304 (18/10) Stainless Steel
- Hygienic and vandal resistant
- With or without splashback and tiling key
- Basin with pressed bowls
- Semi-pierced tap holes and soap recesses



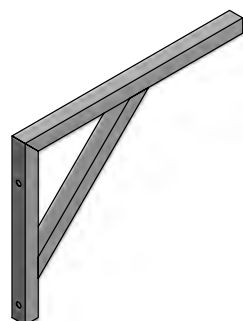
TOP VIEW



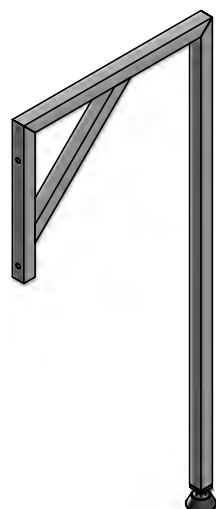
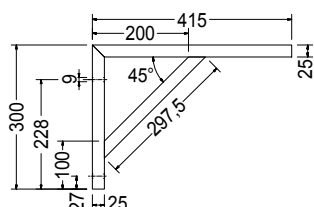
FRONT VIEW

WB002 - 2 Bowl Basin	1012x430x140	359350
WB003 - 3 Bowl Basin	1517x430x140	359352
WB004 - 4 Bowl Basin	2024x430x140	359354
WB005 - 5 Bowl Basin	2530x430x140	359356

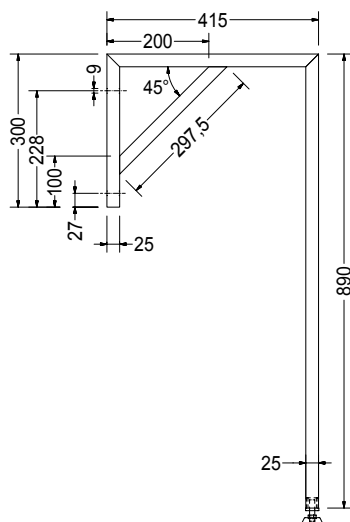
* TAPS & WASTE FITTINGS NOT INCLUDED



GALLOW BRACKET



GALLOW BRACKET WITH LEGS



Fixing Option for WB Range

Gallows Brackets - Galvanised Mild steel

Gallows brackets to be manufactured from electro-galvanised 25mm square mild steel tubing

Gallows Brackets - Stainless Steel

Gallows brackets to be manufactured from 25mm square Stainless Steel tubing

Gallows Brackets and Front Legs - Galvanised Mild steel

Gallows brackets and front legs to be manufactured from electro-galvanised 25mm square mild steel tubing

Gallows Brackets and Front Legs - Stainless Steel

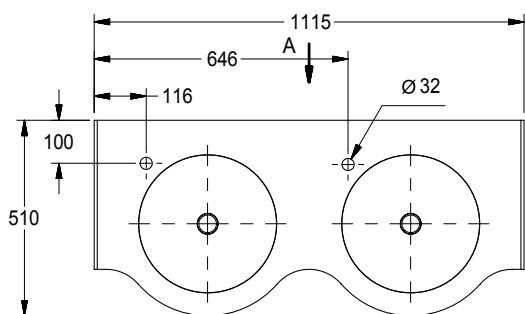
Gallows brackets and front legs to be manufactured from 25mm square Stainless Steel tubing

Gallows Brackets - Galvanised Mild Steel	525x300	300365
Gallows Brackets - Stainless Steel	525x300	300361
Gallows Brackets & Front Legs - Galvanised Mild Steel	525x890	300364
Gallows Brackets & Front Legs - Stainless Steel	525x890	300363

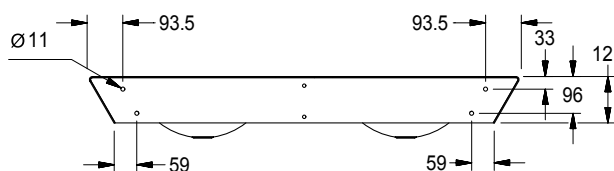
Wash Hand Basins

WASH HAND
BASINS

IMAGE	TYPE / MODEL	DIMENSIONS (L X D X H) mm	PRODUCT CODE
-------	--------------	---------------------------	--------------



TOP VIEW



FRONT VIEW

Stratos - Wall Mounted Wash Hand Basins

Designed for Hotels, Restaurants and Offices

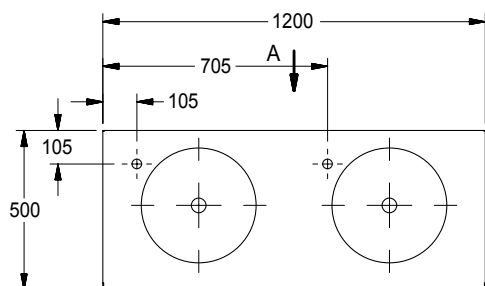
Franke Model STR...(please specify) Stratos Range of wash hand basin. Unit to be manufactured from Grade 304 (18/10) Stainless Steel, 3mm gauge (top) and bowls 1,2mm gauge. Size 360mm diameter x 150mm deep with 40mm waste outlets. Unit to be fixed to wall anchor bolts with 3mm Stainless Steel bracket for reinforcement. (Bolts elsewhere measured)

- Grade 304 (18/10) Stainless Steel
- Pressed bowls
- 3mm mounting bracket for reinforcement
- Upmarket design
- Satin finish with polished bowls
- The unit features an architecturally upmarket designed apron with a curved appearance

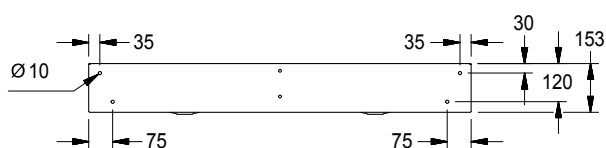
STR02 range of two 1115x510x150 **357162**

STR03 range of three 1645x510x150 **357161**

* TAPS & WASTE FITTINGS NOT INCLUDED



TOP VIEW



FRONT VIEW

Chronos - Wall Mounted Wash Hand Basins

Designed for Shopping Centres, Filling Stations and Public Ablutions

Franke Model CHR...(please specify) Chronos Ranges of wash Hand Basin. Unit to be manufactured from Grade 304 (18/10) Stainless Steel, 1,6mm gauge (top) and bowls 1,2mm gauge. Size 360mm diameter x 150mm deep with 40mm waste outlets. Unit to include a radius to the front and 100mm apron all round to conceal the bowl and the plumbing. Unit to be fixed to wall using rawl bolts with 3mm Stainless Steel bracket for reinforcement. (Bolts elsewhere measured)

- Grade 304 (18/10) Stainless Steel
- Pressed Bowls
- 3mm mounting bracket for reinforcement.
- Upmarket design
- Satin finish with polished bowls
- Vandal proof and low maintenance

CHR02 range of two 1200x491x150 356658

CHR03 range of three 1800x491x150 356721

CHR04 range of four 2400x491x150 356720

* TAPS & WASTE FITTINGS NOT INCLUDED

IMAGE	TYPE / MODEL	DIMENSIONS (L X D X H) mm	PRODUCT CODE
-------	--------------	---------------------------	--------------



Flat Bed - Wall Mounted Wash Hand Basins

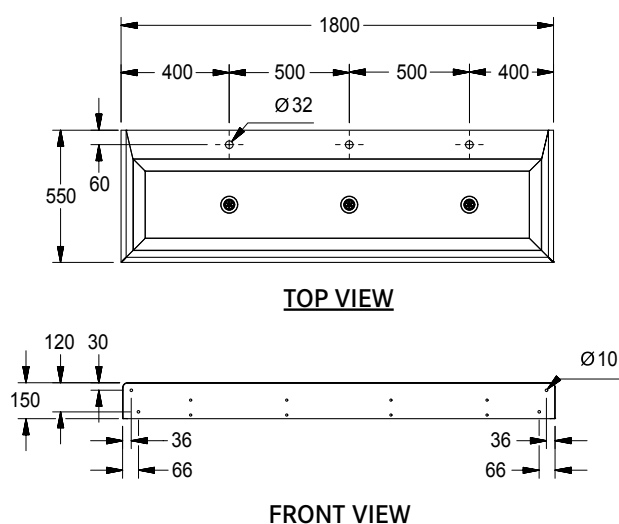
Designed for Shopping Centres, Filling Stations and Public Ablutions

Franke Model FB...(please specify) Flat Bed Wash Hand Basin. Unit to be manufactured from Grade 304 (18/10) Stainless Steel, 1,6mm gauge. Unit to include a 50mm deep trough like basin with 40mm waste outlets and 150mm apron all round. Basin to include outlets and tap holes evenly spaced and to be fixed to the wall with 3mm Stainless Steel bracket for reinforcement. (Bolts elsewhere measured).

- Grade 304 (18/10) Stainless Steel, 1,6mm gauge
- Shallow trough basin 50mm
- 3mm mounting brackets for reinforcement.
- With 150mm apron all round

FB18	1800x550x150	356659
FB24	2400x550x150	357459

* TAPS & WASTE FITTINGS NOT INCLUDED



GALLOWES BRACKET & FRONT LEG



Custom Made Slab Sink with knee operated valves - Wall & Floor Mounted Wash Hand Basins

Designed for the Food Preparation and Manufacturing Industry Application, where hygiene is of the utmost importance.

Franke Model SS...(please specify) Slab Sink. Unit to be manufactured from Grade 304 (18/10) Stainless Steel, 1,6mm thick, with a 300mm splash back. Sink includes a 50mm deep trough like basin with 40mm waste outlets, outlets and a hole for the pillar spout evenly spaced. Unit to be supplied with pedestals and knee operated pedals. Spout and valves optional (please specify), plumbing elsewhere measured. Unit to be fixed to the wall with 3mm Stainless Steel bracket for reinforcement. (Bolts elsewhere measured).

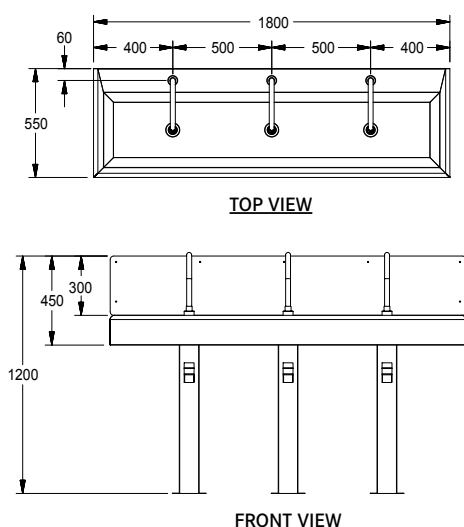
- Grade 304 (18/10) Stainless Steel, 1.6mm gauge
- Shallow trough basin 50mm
- 3mm mounting brackets for reinforcement.
- With 100mm apron all round
- Complete with 300mm Splash Back
- Maximum length must not exceed 2500mm

SS18 - 3 spout option	1800x550x50	356663
SS24 - 4 spout option	2400x550x50	356704

Optional:

Slab Sink Knee operated valve Cobra KM1.00	359660
Slab Sink Pillar Spout Cobra DA-006TUPT210	359662

* TAPS & WASTE FITTINGS NOT INCLUDED

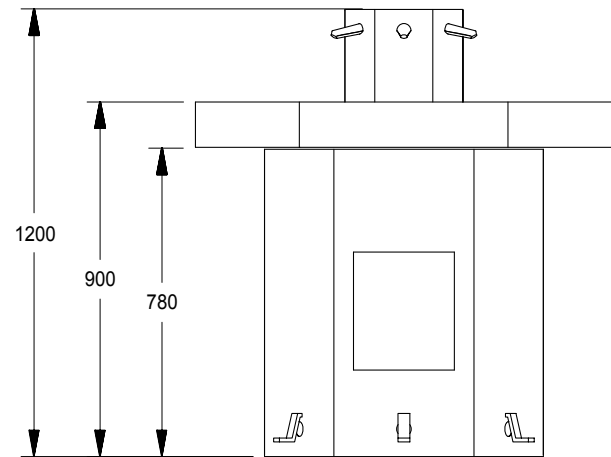


Wash Hand Basins

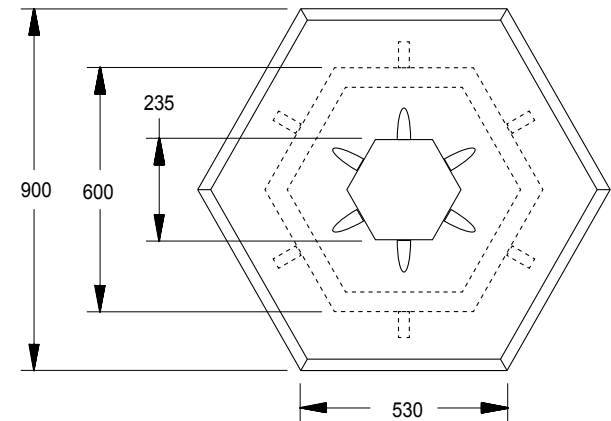
IMAGE	TYPE / MODEL	DIMENSIONS (L X D X H) mm	PRODUCT CODE
-------	--------------	---------------------------	--------------



FOOT OPERATED



FRONT VIEW



TOP VIEW

FOOT OPERATED

Wash Fountain & Basin - Foot or Hand Operated

Hot & Cold water installation:

Franke Model WFF6 (foot-operated) or WFH6 (hand-operated) wash fountain and basin, 900x900x1200mm. Unit to be manufactured from Grade 304 (18/10) Stainless Steel, 1.6mm gauge. Unit to be fully plumbed up to 3/4" BSP cold water connection for a thermostatic mixing valve (thermostatic mixing valve elsewhere measured) for hot and cold water. Unit to be supplied with one 40mm C.P. on brass waste outlet connection.

Cold water installation only:

Franke Model WFF6 (foot-operated) or WFH6 (hand-operated) wash fountain and basin, 900x900x1200mm. Unit to be manufactured from Grade 304 (18/10) Stainless Steel, 1.6mm gauge. Unit to be fully plumbed up to 3/4" BSP cold water connection. Unit to be supplied with one 38mm C.P. on brass waste outlet connection.

- Manufactured in Grade 304 (18/10) Stainless Steel, 1.6mm gauge
- Individually hand or foot operated metering valves
- Fully plumbed up to single point internal inlet and waste connections
- Single waste outlet only
- Can accommodate up to six people simultaneously
- Highly accessible allowing ample full arm washing
- 120mm high apron to eliminate floor spillage
- Equipped with two easy accessible inspection panels to facilitate maintenance
- Floor fixing through reinforced Stainless Steel flat bar
- Space saving

WFF6 - Foot Operated	900x900x1200	352350
WFH6 - Hand Operated	900x900x1200	352400

IMAGE	TYPE / MODEL	DIMENSIONS (L X D X H) mm	PRODUCT CODE
-------	--------------	---------------------------	--------------



DF Pedestal Type Drinking Fountain

Franke “DF” Pedestal Type Drinking Fountain 400x400x920mm high. Unit to be manufactured from Grade 304 (18/10) Stainless Steel, 1.2mm gauge. Unit to include a one piece pressed bowl with a 40mm waste outlet and removable top section. Unit to be supplied with a Bubbler OR Carafe Spout...(please specify). Unit to be supplied complete with a reinforced fixing flange. Unit to be fixed to floor with 10mm masonry bolts. (Bolts elsewhere measured).

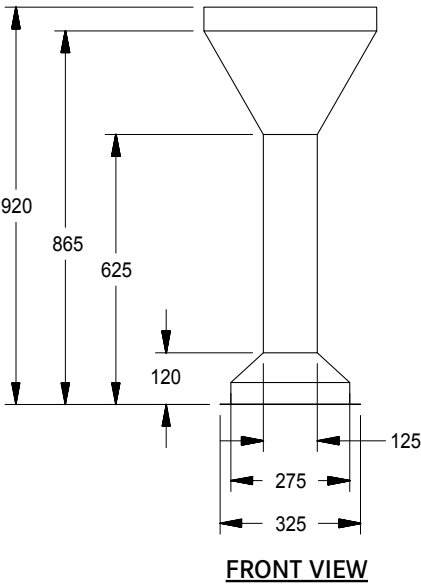
- Manufactured from Grade 304 (18/10) Stainless Steel, 1,2mm gauge
- Free standing pedestal type drinking fountain
- Pressed bowl
- Removable top section
- Reinforced floor fixing flange.
- Available with a Carafe Spout or a Bubbler

DF Drinking Fountain	400x400x900	352250
----------------------	-------------	--------

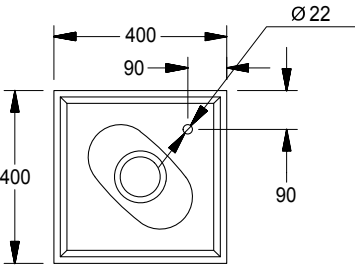
Optional:

Bubbler Kit	490107
Carafe Spout	490108

* TAP, WASTE FITTING & PLUMBING NOT INCLUDED



FRONT VIEW



TOP VIEW





LAUNDRY PRODUCTS

Laundries are subject to heavy usage and a comprehensive range of products are available to meet the criteria of aesthetics, functionality and application.

The range of products cover various sectors of the industry varying from residential to industrial and public facilities.

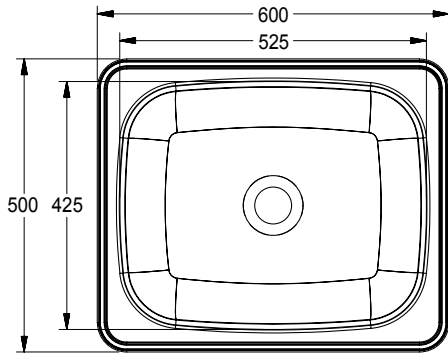
Most laundry products are externally used and exposed to the elements and sunlight. Stainless Steel is highly resistant to deterioration in these applications.

Various Designs for Different Applications

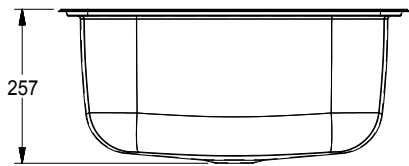
- Suitable for a variety of environments
- Selection of Washtroughs and laundry products

Laundry Products

IMAGE	TYPE / MODEL	DIMENSIONS (L X D X H) mm	PRODUCT CODE
-------	--------------	---------------------------	--------------



TOP VIEW



FRONT VIEW

DLT Luxtub - Inset Washtub

Franke Model DLT Inset Washtub 600x500x257mm. Unit to be manufactured from Grade 304 (18/10) Stainless Steel, 0,9mm gauge. Unit to include a pressed bowl 525x425x257mm deep (43 litres) with a 40mm waste outlet. Unit to be fitted into the worktop, cut out size 585x485mm (worktop elsewhere measured).

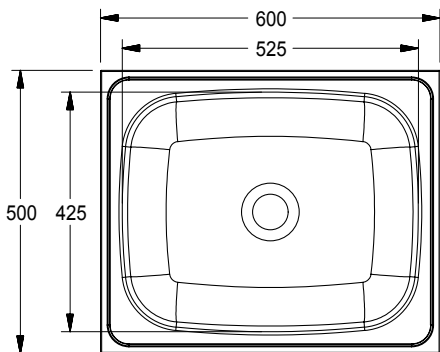
- Grade 304 (18/10) Stainless Steel, 0,9mm gauge
- Inset type for fitting to worktop
- One piece pressed bowl 43 litres

DLT Luxtub

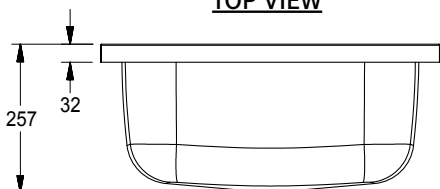
600x500x257

318650

* WASTE FITTING NOT INCLUDED



TOP VIEW



FRONT VIEW

LDL Luxtub - Wall Mounted or Drop-on Washtub

Franke Model LDL Drop-on Washtub 600x500x257mm. Unit to be manufactured from Grade 304 (18/10) Stainless Steel, 0,9mm gauge. Unit to include a pressed bowl 525x425x257mm deep (43 litres) with a 40mm waste outlet. Unit to be fixed to the wall with a pair of galvanised mild steel Falcon Brackets (brackets optional, please specify).

- Grade 304 (18/10) Stainless Steel, 0,9mm gauge
- Trough wall mounted or drop on type
- One piece pressed bowl 43 litres

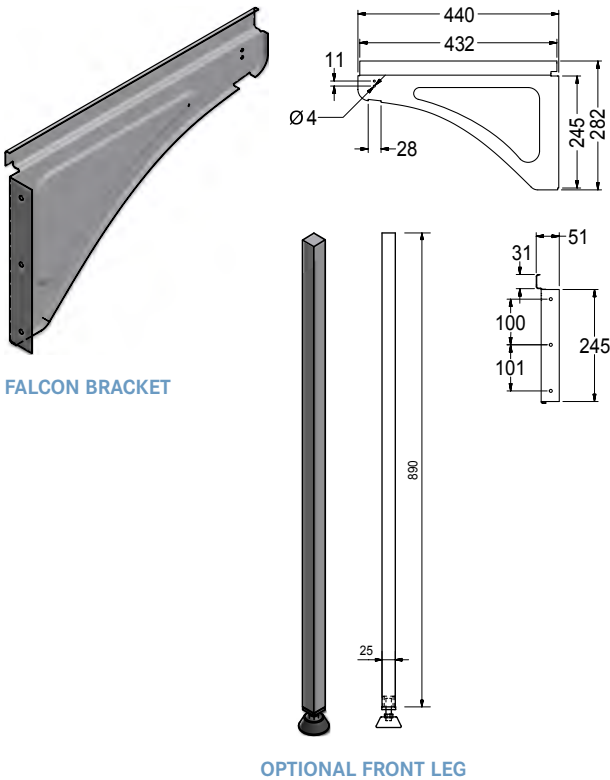
LDL Luxtub

600x500x257

318600

* WASTE FITTING NOT INCLUDED

IMAGE	TYPE / MODEL	DIMENSIONS (L X D X H) mm	PRODUCT CODE
-------	--------------	---------------------------	--------------



FALCON BRACKET

OPTIONAL FRONT LEG

Falcon Bracket for Washtroughs

Falcon Brackets (Patent No.95/4163)

Wall fixing brackets 440x280 to be manufactured from galvanised mild steel.

Optional:

Bolt on leg to be manufactured from electro polished 25mm square mild steel tubing with an adjustable foot and floor fixing flange.

Suitable for LDL Washtrough only

Falcon Bracket	440x280	300322
Bolt on Legs	890x25	300065



SIRX342 - Inset or Wall Mounted Washtrough

INSET TYPE

Franke Model SIRX342 Washtrough, 500x450x240mm deep. Unit to be manufactured from Grade 304(18/10) Stainless Steel, 1,2mm gauge. Unit to be fitted into the worktop (worktop elsewhere measured).

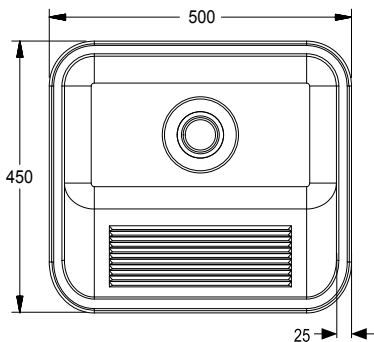
WALL MOUNTED

Franke Model SIRX342 Washtrough, 500x450x240mm deep. Unit to be manufactured from Grade 304(18/10) Stainless Steel, 1,2mm gauge. Unit to be fixed to the wall with a pair of Stainless Steel wall fixing brackets (brackets optional, please specify).

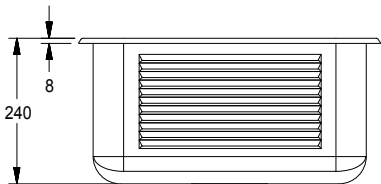
- Grade 304 (18/10) Stainless Steel, 1,2mm gauge
- Inset type for fitting to unit top or suitable for bracket fixing.
- Slanted ribbed front for scrubbing
- Pressed bowl with radiused corners

SIRX Washtrough	500x450x240	318619
-----------------	-------------	--------

* WASTE FITTING NOT INCLUDED



TOP VIEW



FRONT VIEW

Laundry Products

LAUNDRY
PRODUCTS

IMAGE

TYPE / MODEL

DIMENSIONS (L X D X H) mm

PRODUCT CODE

SIRX Washtrough Wall Fixing Brackets

Wall fixing brackets to be manufactured from Grade 304 (18/10) Stainless Steel, 1,2mm thick.

SIRX Washtrough Fixing Brackets

300367

SIRX003 WITH GALLOWS BRACKET & FRONT LEG (OPTIONAL)

SIRX Washtrough Range

Franke Model SIRX...(please specify) range of Washtroughs. Unit to be manufactured from Grade 304 (18/10) Stainless Steel, 1,2mm gauge. With pressed bowls 500x450x240mm deep (43 litres) with a 40mm waste outlet.

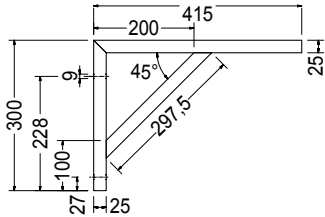
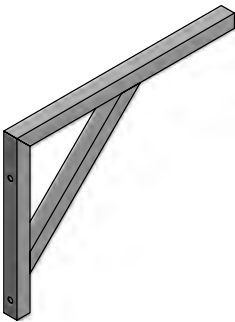
Unit to be fixed as follows (please specify):

- Fixed to wall on two 25mm square mild steel galvanised or Stainless Steel gallows brackets
- Fixed to wall and floor on two 25mm square mild steel galvanised or Stainless Steel gallows brackets with front legs and adjustable foot piece height 915mm from finished floor level
- Grade 304 (18/10) Stainless Steel, 1,2mm gauge
- Suitable for bracket fixing.
- Slanted ribbed front for scrubbing
- Pressed bowl with radiused corners

SIRX002	1200x510x257	357004
- 2 Bowl Washtrough		
SIRX003	1800x510x257	357002
- 3 Bowl Washtrough		

* WASTE FITTING, GALLOW BRACKETS & FRONT LEGS NOT INCLUDED

IMAGE	TYPE / MODEL	DIMENSIONS (L X D X H) mm	PRODUCT CODE
-------	--------------	---------------------------	--------------



Fixing Option for SIRX Ranges

Gallows Brackets - Galvanised Mild steel

Gallows brackets to be manufactured from electro-galvanised 25mm square mild steel tubing

Gallows Brackets - Stainless Steel

Gallows brackets to be manufactured from 25mm square Stainless Steel tubing

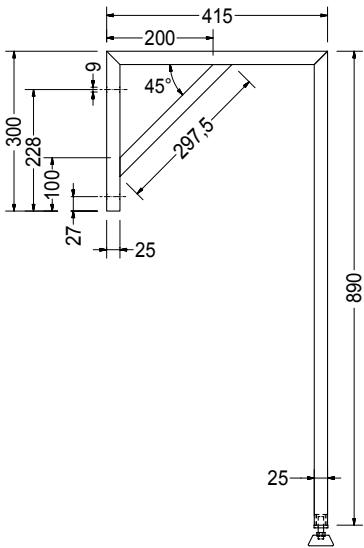
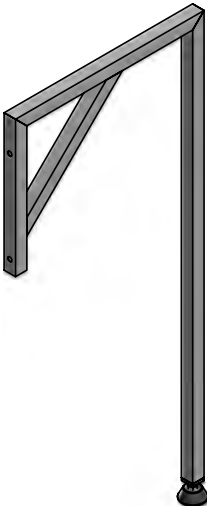
Gallows Brackets and Front Legs - Galvanised Mild steel

Gallows brackets and front legs to be manufactured from electro-galvanised 25mm square mild steel tubing

Gallows Brackets and Front Legs - Stainless Steel

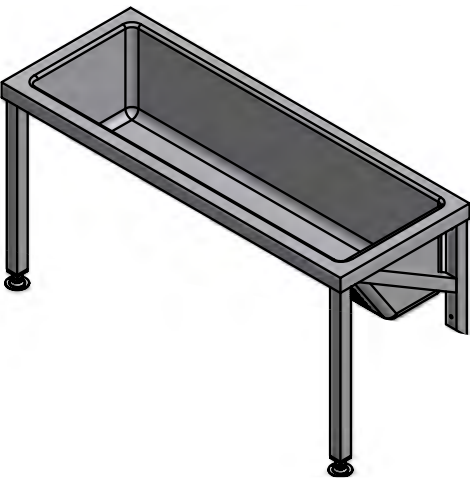
Gallows brackets and front legs to be manufactured from 25mm square Stainless Steel tubing

GALLOW'S BRACKET



GALLOW'S BRACKET & FRONT LEG

Gallows Brackets - Galvanised Mild Steel	525x300	300365
Gallows Brackets - Stainless Steel	525x300	300361
Gallows Brackets & Front Legs - Galvanised Mild Steel	525x890	300364
Gallows Brackets & Front Legs - Stainless Steel	525x890	300363



BWT Blanket Washtrough

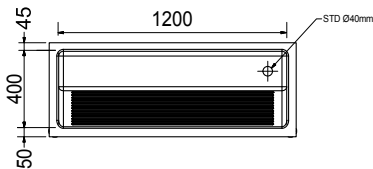
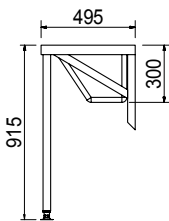
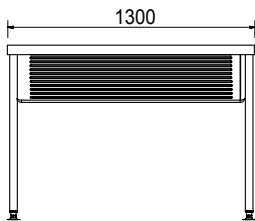
Franke Model BWT Blanket Washtrough, 1300x495x300mm. Unit to be manufactured from Grade 304 (18/10) Stainless Steel, 1.2mm gauge. Radiused internal corners and sloped front, with 40mm waste outlet. Unit to be supplied complete with two Stainless Steel gallow's brackets with front legs.

- Manufactured from Grade 304 (18/10) Stainless Steel 1.2mm gauge
- One 40mm waste outlet minimising plumbing costs
- Optional gallow's brackets and front legs

BWT Blanket Washtrough	1300x495x300	357040
------------------------	--------------	--------

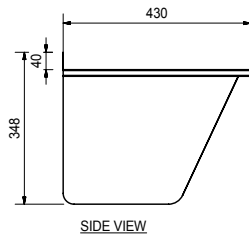
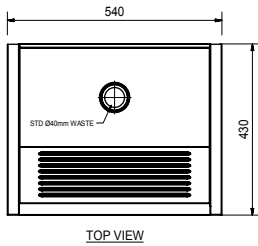
* WASTE FITTING NOT INCLUDED

BWT WITH GALLOW'S BRACKET & FRONT LEG (INCLUDED)



Laundry Products

IMAGE	TYPE / MODEL	DIMENSIONS (L X D X H) mm	PRODUCT CODE
-------	--------------	---------------------------	--------------



ET101 Fabricated Single Washtrough

Franke Model ET101 Single Fabricated Economy Type Washtrough, 540x430x348mm deep. Unit to be manufactured from Grade 430 (17/10) Stainless Steel, 0,8mm gauge. Unit to be manufactured with a sloped front, with wash ridges and a 40mm waste outlet. Trough to be supplied with fixing lugs to mount the trough to the wall. (Bolts elsewhere measured)

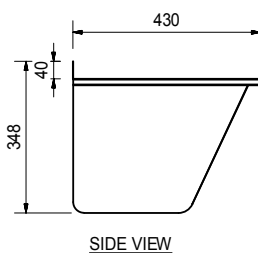
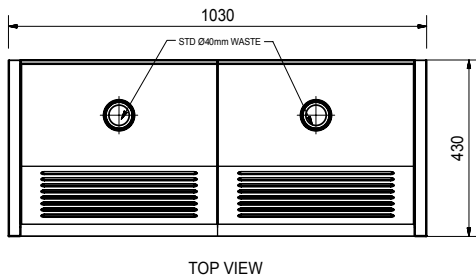
- Manufactured from Grade 430 (17/10) Stainless Steel
- Suitable for light purpose applications
- Supplied with fixing lugs for wall mounting

***Note: The economy type Washtroughs are not recommended for coastal, heavy duty or corrosive applications.**

Refer to Luxtub models for these applications.

ET101 Fabricated Single Washtrough	540x430x348	320811
---------------------------------------	-------------	---------------

* WASTE FITTING NOT INCLUDED



ET102 Fabricated Double Washtrough

Franke Model ET102 Double Fabricated Economy Type Washtrough, 1030x430x348mm deep. Unit to be manufactured from Grade 430 (17/10) Stainless Steel, 0,8mm gauge. Unit to be manufactured with a sloped front, with wash ridges and a 40mm waste outlet. Trough to be supplied with fixing lugs to mount the trough to the wall. (Bolts elsewhere measured)

- Manufactured from Grade 430 (17/10) Stainless Steel
- Suitable for light purpose applications
- Supplied with fixing lugs for wall mounting

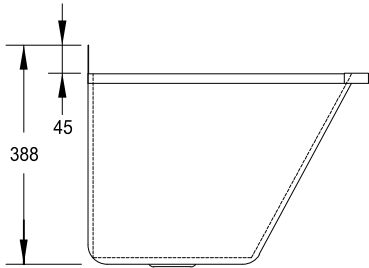
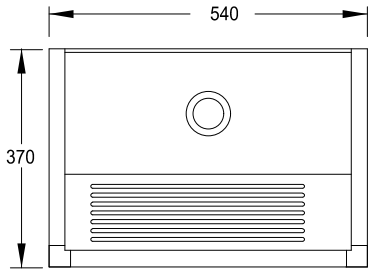
***Note: The economy type Washtroughs are not recommended for coastal, heavy duty or corrosive applications.**

Refer to Luxtub models for these applications.

ET102 Fabricated Double Washtrough	1030x430x348	320200
---------------------------------------	--------------	---------------

* WASTE FITTING NOT INCLUDED

IMAGE	TYPE / MODEL	DIMENSIONS (L X D X H) mm	PRODUCT CODE
-------	--------------	---------------------------	--------------



ET103 Fabricated Mini Washtub

Suitable for Low Cost Housing Projects

Franke Model ET103 Mini Single Fabricated Economy Type Washtub, 540x370x388mm deep. Inner bowl dimension, 483x330mm. Unit to be manufactured from Grade 430 (17/10) Stainless Steel, 0,8mm gauge. Unit to be manufactured with a sloped front, with wash ridges and a 40mm waste outlet. Trough to be supplied with fixing lugs to mount the trough to the wall. (Bolts elsewhere measured)

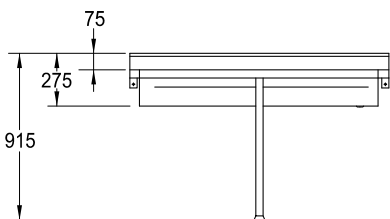
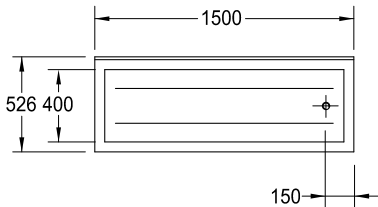
- Manufactured from Grade 430 (17/10) Stainless Steel
- Suitable for light purpose applications
- Suitable for low cost housing projects
- Supplied with fixing lugs for wall mounting

***Note: The economy type Washtubs are not recommended for coastal, heavy duty or corrosive applications.**

Refer to Luxtub models for these applications.

ET103 Fabricated Mini Washtub	540x370x388	320920
----------------------------------	-------------	---------------

* WASTE FITTING NOT INCLUDED



HRT Half Round Washtub

Designed for Public Ablutions, Schools, Abattoirs and Hostels

Franke Model HRT Half Round Washtub, length...(please specify) x 510mm. Unit to be manufactured from Grade 304 (18/10) Stainless Steel, 1,2mm gauge. Unit to be supplied with a 75mm high splash back and tiling key to the back and both ends, with one 40mm waste outlet on left or right hand side ...(please specify). Unit to be mounted on 40x40mm galvanised mild steel square tubing framework, with 100x40x30mm galvanised mild steel flat section cleats welded to back and sides for fixing to walls. Unit to be manufactured complete with one front leg with chrome plated adjustable foot piece.

- Manufactured from Grade 304 (18/10) Stainless Steel, 1,2mm gauge
- One 40mm waste outlet minimising plumbing costs
- 75mm high splash back

*** Please Note**
** Non Standard sizes available on request
** Maximum length not to exceed 2500mm
** Lengths >2500mm to be manufactured as separate units.

HRT - Left Hand Outlet	1500x510x275	359400
HRT - Right Hand Outlet	1500x510x275	359412
HRT - Left Hand Outlet	1800x510x275	359406
HRT - Right Hand Outlet	1800x510x275	359414

* WASTE FITTING NOT INCLUDED





OTHER FRANKE PRODUCTS



WASHROOM ACCESSORIES

Franke have a wide range of Stainless Steel accessories for all applications; hands free, wall mounted and recessed accessories. Our product range includes solid Stainless Steel bathroom accessories, ideally suited for such applications as: hospitals and clinics. The new Rodan range of accessories, its timeless design with angular side profiles lends itself to the contemporary décor of heavily frequented washrooms and rest rooms.



HANDS FREE ACCESSORIES

Franke always strives to find the ultimate hygiene solutions without compromising quality and durability. The hands free accessories offer a hygienic solution for usage in heavily frequented washrooms, wards and rest rooms. The range includes a sensor operated: soap dispenser, paper towel dispenser and hand dryer



GRAB RAILS

Franke grab rails offer a secure support, thanks to Franke's Fine-Grip surface finish, for use in private homes and public, clinical and care sectors.

METERING TAPS & MIXERS



WATER MANAGEMENT

Complementing the Franke range of accessories, a new range of self closing/sensor operated basin taps and mixers have been added. The taps and mixers are of a heavy duty design to improve hygiene and decrease water consumption in public ablutions. The range comprises of an electronic sensor operated mixer and self closing taps and mixers.



TRIFLOW WATER PURIFICATION MIXER

Discover the unique advantages and health benefits of the Franke Triflow water filtration system. Designed and fitted with a premium-grade carbon activated cartridge, the Franke Triflow is a health-conscious and quality drinking water filtration system. The Triflow dispenses hot, cold and perfectly filtered drinking water. The filtration system has the ability to filter out chlorides, odours and sedimentation from the water, it however does not 'strip' the water of its goodness and retains beneficial minerals such as calcium and magnesium - essential for a healthy diet.

ZIP HYDROBOILS AND CHILLERS



Zip Hydroboils are convenient plumbed-in boiling water systems that deliver instant boiling water 24 hours a day. It is a sealed system to provide ultimate hygiene and low electricity consumption. It is steam free and low maintenance.

Zip chillers are manufactured to provide chilled water under extreme temperatures. The units are plumbed to provide low operating costs, together with convenience.



HOSPITAL & MORTUARY PRODUCTS

Franke is the leading supplier of sanitaryware products to hospitals, clinics and mortuaries, environments where hygiene is of the highest priority. Our design and construction ensure that our products meet the demands of safety, hygiene and quality. Our hospital range includes:- Stainless Steel Slop Hoppers, Drip Sinks, Bottle Racks, Bed Pan Wash Up Sinks, Surgeon Scrub-Up Units, Plaster of Paris Sinks and Baths. Our mortuary range includes:- Rapid Transfer Gross Anatomy Trolleys, Body Trays, Post Mortem Tables, an Instrument Cabinet and Writing Desk.

INDUSTRIAL PRODUCTS

The range includes Industrial Sinks, Tables, Wall Benches and Shelving. Heavy duty industrial sinks and tables with sound deadening under frames. The range is complimented by a selection of modular designed shelving systems for medical and catering purposes.



DEKO 25

The DEKO 25 can be situated on a dedicated DEKO stand accessory or a cabinet, as well as, be positioned undercounter. The DEKO 25 meets the performance and design requirements stated in EN ISO 15883 parts 1 & 2, as well as the safety requirements stated in IEC 61010-2-040. Utilising the power of the 260 litres per minute circulation pump, process and cleaning results are guaranteed throughout the wash chamber. The capacity also allows for the insertion of additional wash racks to facilitate the washing of cannulated instruments, dental handpieces, hoses, glassware and rigid scopes.

DEKO 25 Base Model

355001



DEKO 190

DEKO 190 has a large wash chamber and capacity for automatic emptying and processing of 2 bedpans with lids and 4 urine bottles simultaneously. The integrated drop down shelf provides space for 4 hand wash basins or a mop bucket with seating ring. The shelf can also be utilised as a base to accommodate and process inserts and washing accessories e.g. kidney dishes, bowls, vases, toilet brushes/holders, as well as, various hollowware.

DEKO 190 Base Model

355011



DEKO 260 Washer Disinfector (NEW MODEL 2013)

DEKO 260 Washer-disinfector-dryer is designed and manufactured to be fully compliant with the requirements of ISO EN 15883 Parts 1 & 2. It builds on the already well proven reliability and simple operation synonymous with Franke and ensures thorough cleaning and efficient processing of reusable medical and laboratory equipment.

DEKO 260 Base Model

355005



DEKO 2000

The DEKO 2000 is designed and constructed to meet the performance and design requirements stated in EN ISO 15883-1 Washer-disinfectors -

Part 1: General requirements and in Part 2: Requirements and tests for surgical instruments, anaesthetic and respiratory equipment, hollowware, utensils, glassware etc., as well as, the safety requirements stated in IEC 61010-2-40: Particular requirements for washer-disinfectors used in medical, pharmaceutical, veterinary and laboratory fields.

DEKO 2000 Base Model

355007



DEKO 2200

DEKO 2200 Drying cabinet is designed especially for drying surgical instruments, anaesthetic hoses & equipment, as well as other reusable items used in patient health care. It is dimensioned particularly for use together with the DEKO-2000 -series washer- disinfectors. The chamber can accommodate two full loads (4+4 shelves) from the washers. The sound and heat insulated double walls of the cabinet are made of AISI304 stainless steel. DEKO 2200 is available as a single door or pass-through model, left or right-hinged.

DEKO 2200 Dryer

355003

New Mortuary Products

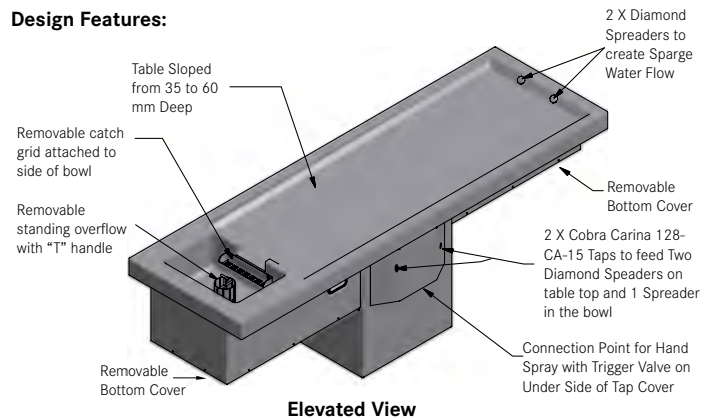
IMAGE

OTHER FRANKE
PRODUCTS



Franke have a reputation for the design and manufacturing of high quality stainless steel washroom and hospital equipment. Franke are now offering services to the field of mortuary medical equipment in providing a total design and manufacture service of autopsy tables, body storage racks, body trays and transport trolleys. Our services include an in-house INVENTOR 3D design facility, enabling us to provide a complete service from concept to design to manufacture and supply of completed products.

Design Features:



AUTOPSY TABLE

Franke model KZ Autopsy table is pedestal style table that is ergonomically designed to facilitate free operator movement when using the table. The table is manufactured in grade 316 stainless steel with integrally constructed bowl and is supplied complete with all the plumbing fittings and is fitted with a 110mm waste outlet with a removable standing overflow.

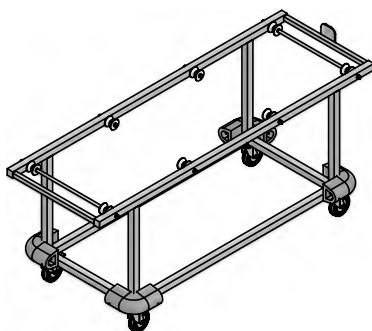
BODY RACKS

Standard and Obese Body Racks

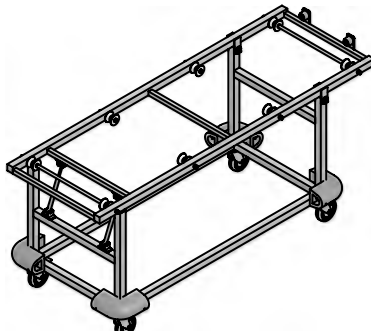
Body Racks are manufactured to comply with the standard mortuary design specification and dimensions, the struts and main bearers are fabricated from 40 x 40 x 1, 5 mm thick stainless steel square tubing and the stays and roller supports are 3 mm thick 304 stainless steel. The rollers are nylon and rollers shafts and rods are 16 mm diameter grade 304 stainless steel. The racks are designed to add additional roller shafts assemblies and bearers to extend the racking to accommodate additional body trays (banks of 2, 3 etc.).

TRANSPORT TROLLEYS & BODY TRAYS

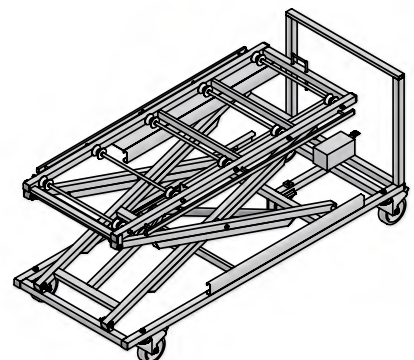
This is an essential part of the post-mortem laboratory and in the hospital the transport and hydraulic lifting trolleys are designed to transport the body from cold chamber racks to display trolley or autopsy table.



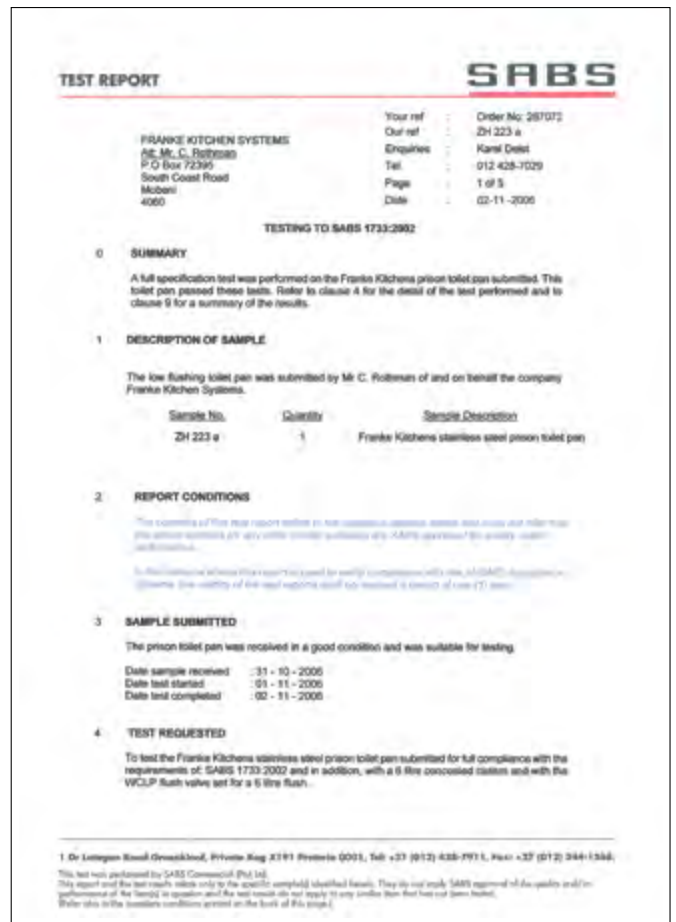
Franke Model TLT Tilting Trolley



Franke Model TT Transport Trolley



Franke Model ET Elevation Trolley
Able to raise up to ± 1.85 Meters High



FRANKE KITCHEN SYSTEMS (PTY) LTD

CALL CENTRE

Tel 0861 372 653

Fax 0866 592 073

enquiry.fsa@franke.com

www.franke.co.za

DURBAN

1194 South Coast Road,

Mobeni, Durban, 4092.

South Africa

Tel +27 31 450 6300

Fax +27 31 450 6304

GAUTENG

77 Roan Crescent,

Sage Corporate Park North,

Old Johannesburg Road,

Midrand, 1682

South Africa

CAPE TOWN

Unit 1, Gold Street,

Northgate Business Park, Northgate Estate,

Cape Town, 7405

South Africa

DISCLAIMER

The information and dates supplied in this brochure are based on the information believed to be reliable, however are not binding and inaccuracies may occur.

Franke reserves the right to change Specification and design at any time without notice.

© 2013 by Franke Kitchen Systems (Pty) Ltd. All rights reserved under the Copyright Act of 1987 with the amendments. Reproduction of any of the content, full or partial, is allowed only with prior written approval of Franke Kitchen Systems (Pty) Ltd. No reasonable requests will be refused provided the conditions as laid out are met.



WASHROOM
SYSTEMS