



SECURITY PRODUCTS

Product Guide 2013

WASHROOM
SYSTEMS

FRANKE

Index

WC Pans, Squat Pans & Urinals	02-10
Introduction to WC Pans	02
HDTX592 - Heavy Duty Wall Hung Pan.....	04
HDTX594 - Heavy Duty Wall Hung Pan for Disabled.....	05
HDTX597 Wall & Floor Mounted Shrouded Pan.....	06
HDTX850 Combi Unit (Bolt Fixing Type)	07
Security Frame for HDTX850 Combi Unit.....	08
HDTX860 Heavy Duty Combi Unit (Push-Fit/ Bracket Fixing Type)	09
Squat Pan.....	10
SBE Barron Bowl Urinal (Security Type).....	10
SAPS Approved Products	11
SAPX597 Maximum Security WC Pan	11
SAPSDF Combination Wash Hand Basin & Drinking Fountain	11
Prison Approved Products	12
Recessed Type Toilet Roll Holder.....	12
Wall Mounted Shelf	12
SIRX002HD Double Washtrough.....	12
Heavy Duty Wash Hand Basins	13
HDS Heavy Duty Surrond Wash Hand Basins.....	13
HDSSB Heavy Duty Surrond Wash Hand Basins.....	13
HDSWMB Heavy Duty Surrond Wash Hand Basins.....	14
HDWHB Heavy Duty Wash Hand Basins	14
Other Franke Products	15-16
New Mortuary Equipment	17
Certificates & Test Compliance	18

Introduction to WC Pans



Franke Wc Pans Are Designed To Reduce Water Consumption By Up To 60%

WC Pans consume up to 90 percent of water usage in commercial buildings. New technology has been introduced to produce a new range that delivers high performance and aesthetically pleasing designs, to compliment the rest of the Franke sanitary ware products. Designed for ultimate hygiene solutions and ease of installation in public ablutions, the range caters for a wide variety of applications, from recreational facilities, shopping centres, petrol stations, airports and stadiums.

Product features:

- Hygienic, quality designs and excellent low water consumption
- Aesthetically pleasing design, with satin finish
- Pressed bowl and P-trap, with minimal welding through robotic welding technology
- Full flush of 4 or 6 litres
- Sturdy design and safety compliant with low maintenance compared with ceramic and composite materials
- Internationally approved accreditation (Refer to accreditations - Page 03)

Plasma Cutting & MIG Welding of WC Pan Assembly

Franke South Africa invested in new technology since 2004 to enhance its export activities into Europe, Australia, New Zealand and Africa.

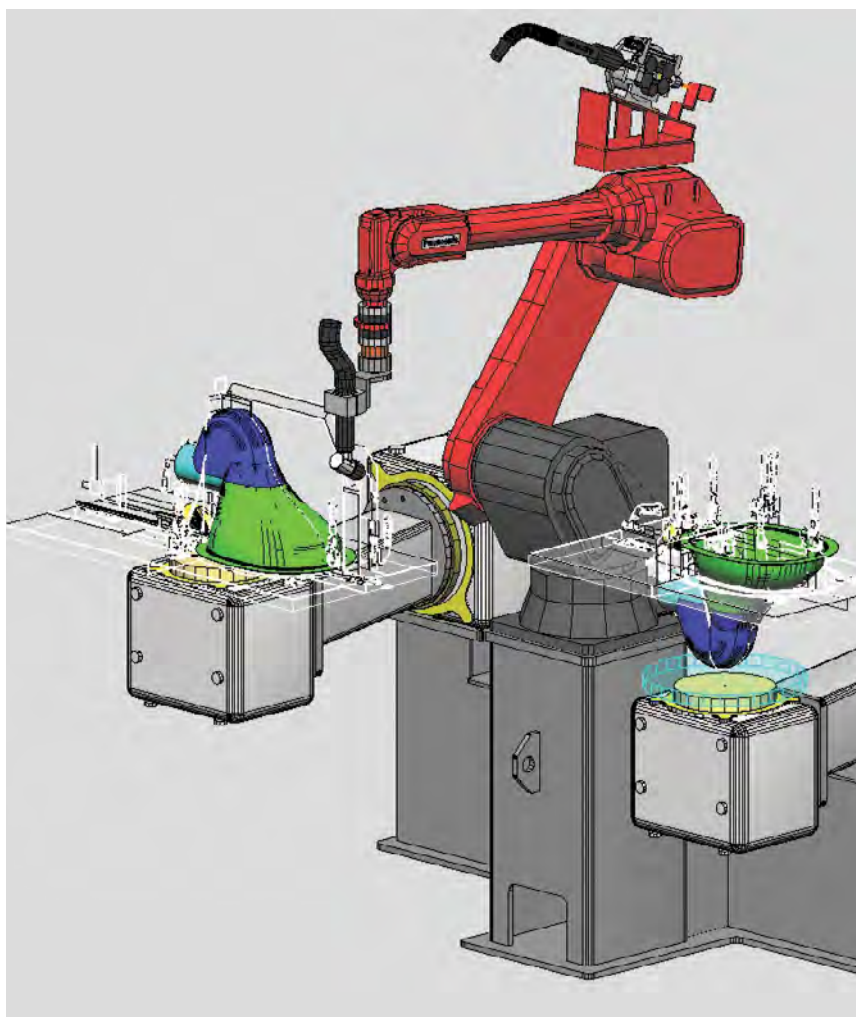
The new range of Stainless Steel wall hung pans is aesthetically pleasing and no longer limited to security applications.

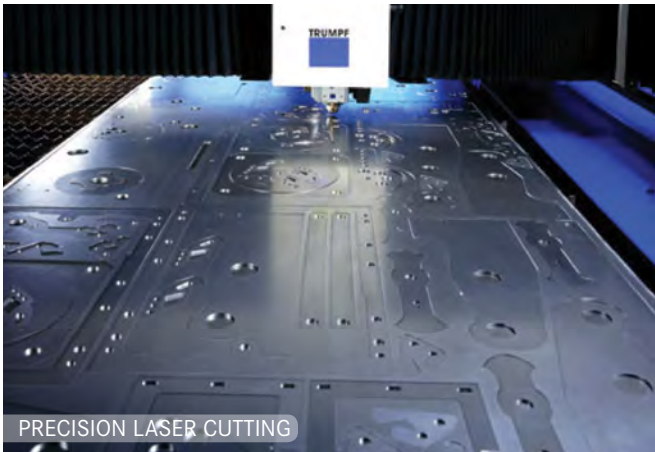
Stainless Steel does not crack or chip and as such has a low replacement rate. Raised above the floor the new range of wall hung pans facilitates easier cleaning around the pan resulting in improved hygiene.

Each WC pan is pickled and passivated to prevent corrosion on welds.

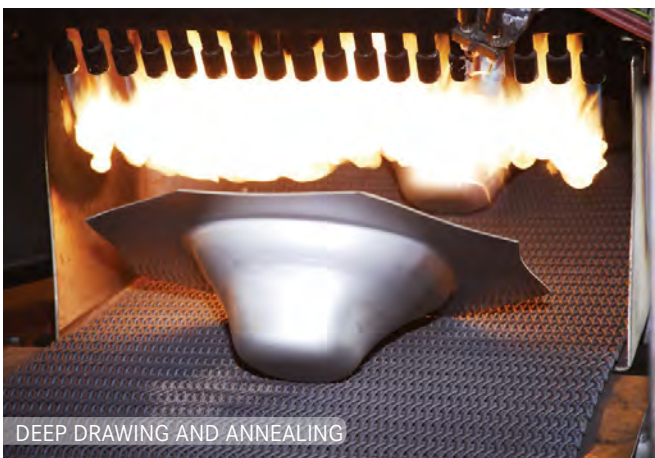
Quality assurance . Each WC pan is tested to ensure that it complies with international standards. The Franke South Africa factory complies with ISO 9001:2008 Quality Management Standards.

ISO Certificate : Page 18





PRECISION LASER CUTTING



DEEP DRAWING AND ANNEALING

ROBOTIC PLASMA
CUTTINGPRECISION
ROBOTIC WELDING

Capital Invested Technology

Enhanced style and finishes have been achieved through a series of investment technologies.

Laser Technology

With the detailed precision, narrowest heat-affected zone and spot-on accuracy produced by advanced laser systems, we can provide the highest quality, intricate and detailed products.

Deep Drawing and Annealing

Deep drawing involves the use of metal dice to form blank sheets of metal into a desired shape thus reducing the need to weld components together. Deep drawing produces products that are significantly stronger and lighter. It also allows for a much smaller risk of error, consistent quality and a more predictable end product in a shorter period of time.

Robot Welding

Robot welding is the use of mechanised programmable tools (robots), which completely automate a welding process by both performing the weld and handling of the part. The automated process that robotic welding brings to steel fabrication provides much higher consistency and repeatability of quality welds. Robotic welding is used to ensure that each Pan conforms with the highest quality standards.

Water Conservation & Quality Assurance (Page 18)

Each Franke WC pan complies with the following SABS standard:
SABS 1733: 2002

Each Franke WC pan complies with the following international standards :

- LGA DIN EN 997: 2008-03: paper removal test
- LGA DIN EN 997: 2008-03: 6 litre flushing test - solids and urine
- LGA DIN EN 997: 2008-03: 4 litre flushing test - solids and urine

IMAGE	TYPE / MODEL	DIMENSIONS (L X D X H)	INLET	PRODUCT CODE
-------	--------------	------------------------	-------	--------------



HDTX592 Heavy Duty Wall Hung Pan

Franke Model HDTX592 Stainless Steel wall hung WC pan. Manufactured from Grade 304 (18/10) Stainless Steel, 360x550x350mm. Pan to be manufactured with a shroud with corner mounting gussets and 10mm nuts and to be supplied with galvanised mild steel threaded rods for securing the pan through the wall. Compliant with SABS 1733:1998 and SABS 497:1991 WC pan to flush with 4 and 6 litres of water. Pan to withstand point load of 400kg as per international standards. Optional seat available (please specify).

- Grade 304 (18/10) polished Stainless Steel
- Hygienic and vandal resistant
- Pressed components to ensure consistent quality and performance
- 4 or 6 litres flushing
- Heavy duty outer casing conceals the plumbing
- The WC pan is fixed to the wall bracket with galvanised mild steel threaded rods
- Wall hung pans are designed to accommodate:
 - Back entry inlet to suit 38mm flush valve connection or 41 mm cistern flush pipe
 - Also designed to suit concealed flushing system
- Sub-assembly of pan is pickled and passivated to prevent corrosion

HDTX592	360x550x350mm	Back Entry	356109
----------------	---------------	------------	---------------

Water Conservation and Quality Assurance

Complies with SABS and LGA DIN EN International Standards. Please refer to Page 3 for details. AST1172 - Watermark Certification (Page 18).

Accessories

Optional Toilet Seats available (Please specify) If required, seat must be specified with WC Pan.

Estonia Soft Self-Closing Seat (black)	356258
---	---------------

Estonia Soft Self-Closing Seat (white)	356255
---	---------------

Wooden slat	356049
--------------------	---------------

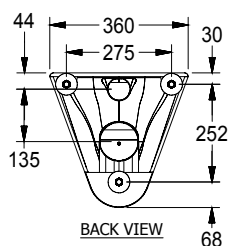
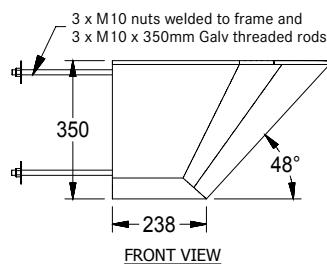
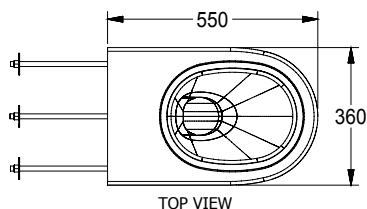


IMAGE	TYPE / MODEL	DIMENSIONS (L X D X H)	INLET	PRODUCT CODE
-------	--------------	------------------------	-------	--------------

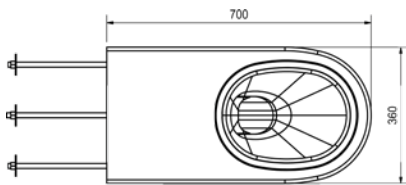


HDTX594 Heavy Duty Wall Hung Pan for DISABLED

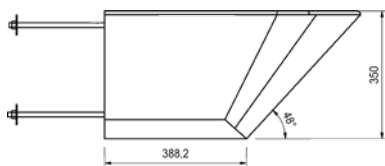
Franke Model HDTX594 Stainless Steel wall hung WC pan. Manufactured from Grade 304 (18/10) Stainless Steel, 360x700x350mm. Pan to be manufactured with a shroud with corner mounting gussets, and 10mm nuts and to be supplied with galvanised mild steel threaded rods for securing the pan through the wall.

Compliant with SABS 1733:1998 and SABS 497:1991 WC pan to flush with 4 and 6 litres of water. Pan to withstand point load of 400kg as per international standards. Optional seat available (please specify).

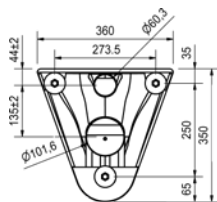
- Grade 304 (18/10) polished Stainless Steel
- Hygienic and vandal resistant
- Pressed components to ensure consistent quality and performance
- 4 or 6 litres flushing
- Heavy duty outer casing conceals the plumbing
- The WC pan is fixed to the wall bracket with galvanised mild steel threaded rods
- Wall hung pans are designed to accommodate:
 - Back entry inlet to suit 38mm flush valve connection or 41 mm cistern flush pipe
 - Also designed to suit concealed flushing system
- Sub-assembly of pan is pickled and passivated to prevent corrosion



TOP VIEW



FRONT VIEW



BACK VIEW

HDTX594	360x550x350mm	Back Entry	356116
----------------	---------------	------------	---------------

Water Conservation and Quality Assurance

Complies with SABS and LGA DIN EN International Standards. Please refer to Page

3 for details. AST1172 - Watermark Certification (Page 18).

Accessories

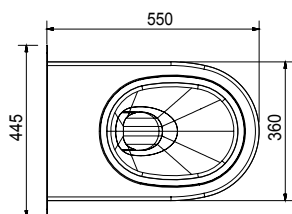
Optional Toilet Seats available (Please specify) If required, seat must be specified with WC Pan.

Estonia Soft Self-Closing Seat (black) **356258**

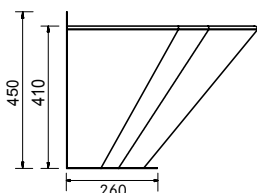
Estonia Soft Self-Closing Seat (white) **356255**

Wooden slat **356049**

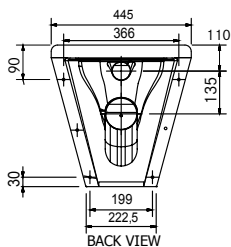
IMAGE	TYPE / MODEL	DESCRIPTION	PRODUCT CODE
-------	--------------	-------------	--------------



TOP VIEW



FRONT VIEW



BACK VIEW

HDTX597 Wall and Floor Mounted Shrouded WC Pan

Franke Model HDTX597 Heavy Duty Wall and Floor Mounted WC Pan 60x550x410mm high. Unit to be manufactured from Grade 304 (18/10) Stainless Steel 1,2mm gauge. Unit to be manufactured with a pressed flushing rim and integral “P” Trap with a 102mm outlet pipe and a 60mm back entry inlet pipe to suit a rubber flush inlet sealing bung. Pan to be manufactured with a shroud, with internal or external flanges...(please specify) for securing the pan through the wall and into floor with anchor bolts. (Bolts elsewhere measured). Compliant with SABS 1733:1998 and SABS 497:1991 WC pan to flush with 4 and 6 litres of water. Pan to withstand point load of 400kg as per international standards.

Optional Extra:

Inlet and outlet pipes extended to 250mm.

- Grade 304 (18/10) Stainless Steel 1.2mm gauge
- Hygienic and vandal resistant
- Pressed components to ensure consistent quality and performance
- 4 or 6 litres flushing
- Heavy duty outer casing conceals the plumbing
- Pressed flushing rim
- Provision for secured fixing through wall and into floor
- Optional provision for seat or wooden slats
- Optional outlet and flush inlet pipes are available, which can be shortened/lengthened to suit plumbing
- Sub-assembly of pan is pickled and passivated to prevent corrosion

HDTX 597	with external flanges (wall and floor)	356082
HDTX 597	with external flanges with 250 mm long extended pipes	356117
HDTX 597	with internal flanges (wall and floor)	356086
HDTX 597	with internal flanges with 250 mm long extended pipes	356118

Water Conservation and Quality Assurance

Complies with SABS and LGA DIN EN International Standards. Please refer to Page 3 for details.

Accessories

Optional Toilet Seats available (Please specify) If required, seat must be specified with WC Pan.

Estonia Soft Self-Closing Seat (black)	356258
Estonia Soft Self-Closing Seat (white)	356255
Wooden slat	356049

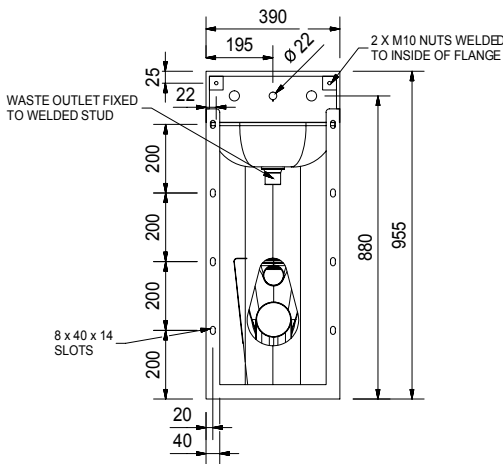
IMAGE	TYPE / MODEL	DESCRIPTION	PRODUCT CODE
-------	--------------	-------------	--------------



LEFT HAND PAN

HDTX850 Heavy Duty Combi Unit (Bolt Fixing Type)

Franke Model HDTX850 Bolt Fix Combination WC Pan and Wash Hand Basin, 390x322x955mm high. Unit to be manufactured from Grade 304 (18/10) Stainless Steel, 1,2mm gauge pan and basin, with 1,6mm gauge pedestal. Unit to be supplied complete with an integrated wash hand basin with a pressed perforated outlet to suit a 40mm waste fitting, and 150mm high splash back with a provision for the basin spout and push buttons for the flush valves which must be installed in the duct behind the unit. Pan to be positioned to the left, right or centre... (please specify). The pedestal of the unit to be manufactured with a built-in toilet roll holder (optional... please specify) and flanges with fixing slots for 8mm threaded rods to secure the unit through the wall (Threaded rods elsewhere measured). Compliant with SABS 1733:1998 and SABS 497:1991 WC pan to flush with 4 and 6 litres of water. Pan to withstand point load of 400kg as per international standards.



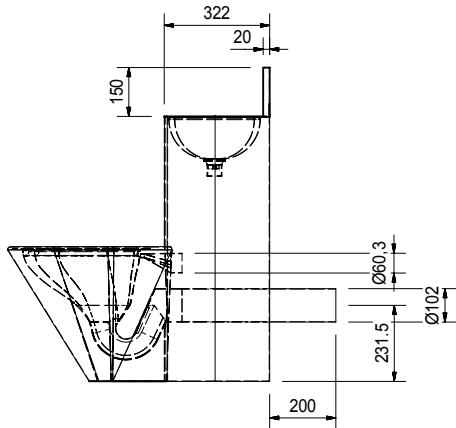
- Grade 304 (18/10) polished Stainless Steel
- Hygienic pan cannot chip or crack
- Designed for the highest level of anti-vandal resistance
- Heavy duty construction pedestal 1,6mm and pan 1.2mm gauge
- Integral wash hand basin
- Space saving
- Pan position can be left, right or centre
- One pieced pressed bowl
- Supplied with PVC waste fitting

Combi Units without Toilet Roll holders:

HDTX 850	Combi Unit with Centre Pan	356 147
HDTX 850	Combi Unit with Left Hand Pan	356 148
HDTX 850	Combi Unit with Right Hand Pan	356 149

Combi Units with Toilet Roll holders:

HDTX 850	Combi Unit with Right Hand Pan	356 151
HDTX 850	Combi Unit with Left Hand Pan	356 152
HDTX 850	Combi Unit with Centre Pan	356 153



Water Conservation and Quality Assurance

Complies with SABS and LGA DIN EN International Standards. Please refer to Page 3 for details.

Accessories

Optional Installation Accessories:

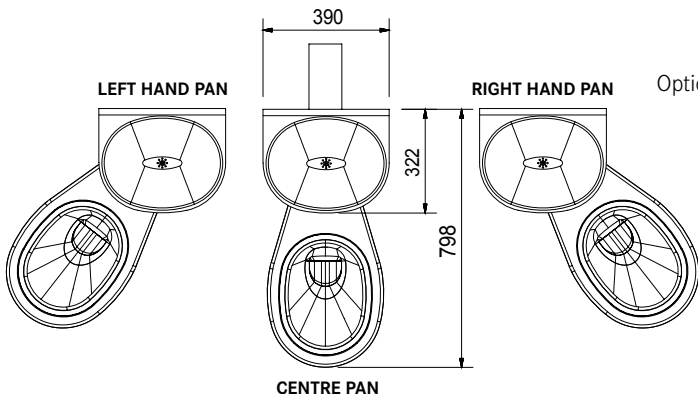
Galvanised Mild steel Security Frame with anti-escape bars. (frame built into the brick work behind the unit).

356017

Optional Plumbing Fittings:

1 x Basin Valve (Cobra - KM1-00F) , 1 x Toilet Valve (Cobra FJ 4-203F), 1 x Flexible Hose (Walcro 15mm x 600mm) and 1 x Spout (Walcro - CIRS Spout Basin 15mm)

825010



IMAGE

TYPE / MODEL

DIMENSIONS (L X H)

PRODUCT CODE



Security Frame For HDTX850 Combi Unit

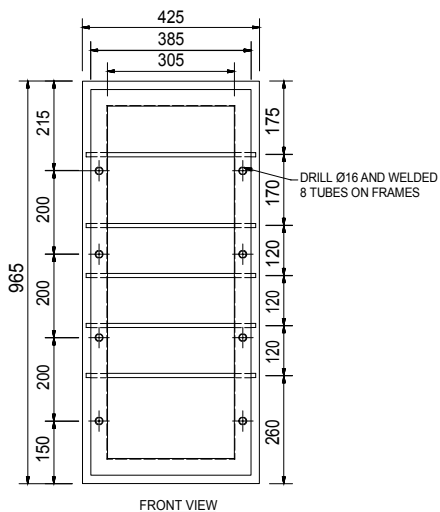
Franke Security Frame for HDTX850 Combi Unit. Unit to be manufactured from galvanised mild steel, 525mmx950mm wall sleeve with 6x13mm Ø anti-escape bars, positioned to allow access to the inlet and outlet. Unit to be built into brick-work and combi unit to then be mounted to the unit.

- Galvanised mild steel, 1.6mm gauge
- Designed for HDTX850 Combi Unit
- Designed for the highest level of anti-vandal resistance
- Frame built into brick-work behind the combi unit

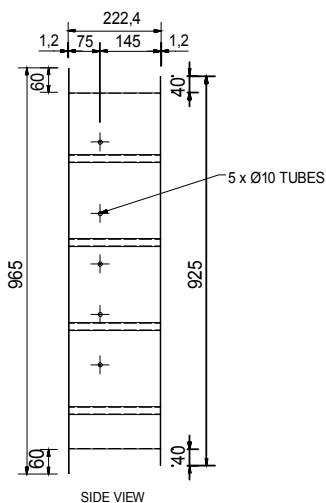
SECURITY FRAME

525x950mm

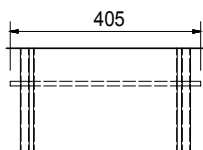
356017



FRONT VIEW

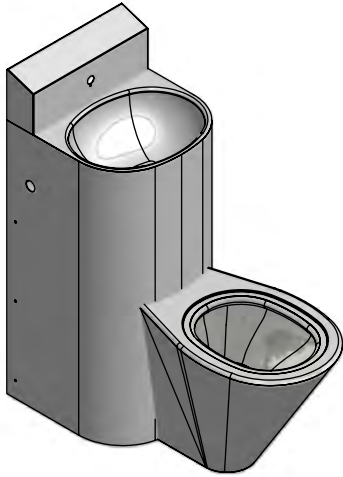


SIDE VIEW



TOP VIEW

IMAGE	TYPE / MODEL	DESCRIPTION	PRODUCT CODE
-------	--------------	-------------	--------------



HDTX860 Heavy Duty Combi Unit (Push-Fit/Bracket Fixing Type)

Franke Model HDTX860 Push Fit Combination WC Pan and Wash Hand Basin 390x400x955mm high. Unit to be manufactured from Grade 304 (18/10) Stainless Steel, 1,2mm gauge pan and basin, with 1,6mm gauge pedestal. Unit to be supplied complete with an integrated wash hand basin, with a pressed perforated outlet to suit a 40mm waste fitting and 150mm high splash back with a provision for the basin spout. Pan to be positioned to the left, right or centre...(please specify). The pedestal of the unit to be manufactured with a built-in toilet roll holder (optional...please specify) and eight 6mm slots and security screws to secure the unit to the wall mounting frame. Pedestal with provision for push buttons for the flush valves which is installed in the unit. The Stainless Steel wall mounting frame to be 3mm thick with eight nutserts and to be fixed to the wall with anchor bolts (bolts elsewhere measured).

Compliant with SABS 1733:1998 and SABS 497:1991 WC pan to flush with 4 and 6 litres of water. Pan to withstand point load of 400kg as per international standards.

- Grade 304 (18/10) polished Stainless Steel
- Hygienic pan cannot chip or crack
- Designed for the highest level of anti-vandal resistance
- Heavy duty construction pedestal 1,6mm and pan 1.2mm gauge
- Integral wash hand basin
- Space saving
- Pan position can be left, right or centre
- One pieced pressed bowl
- Supplied with PVC waste fitting

Combi Units without Toilet Roll holders:

HDTX 860	Combi Unit with Centre Pan	356 133
HDTX 860	Combi Unit with Left Hand Pan	356 134
HDTX 860	Combi Unit with Right Hand Pan	356 135

Combi Units with Toilet Roll holders:

HDTX 860	Combi Unit with Right Hand Pan	356 154
HDTX 860	Combi Unit with Left Hand Pan	356 155
HDTX 860	Combi Unit with Centre Pan	356 156

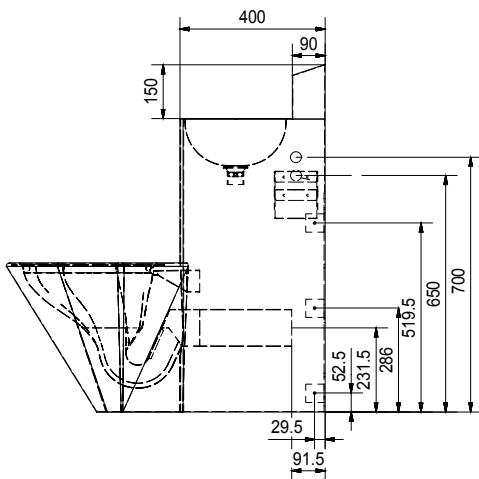
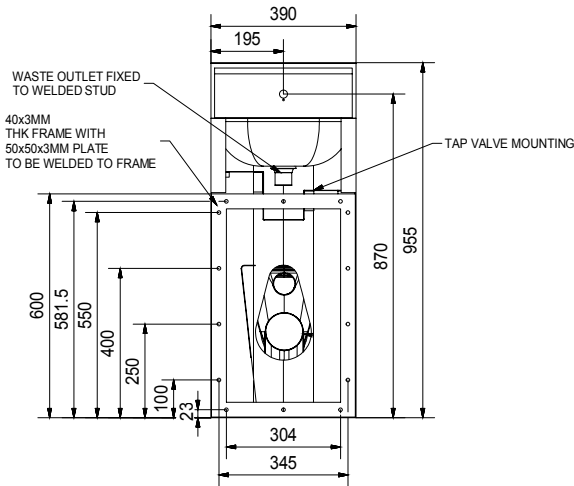
Water Conservation and Quality Assurance

Complies with SABS and LGA DIN EN International Standards. Please refer to Page 3 for details.

Optional Plumbing Fittings:

- 1 x Basin Valve (Cobra - KM1-00F)
- 1 x Toilet Valve (Cobra FJ 4-203F)
- 1 x Flexible Hose (Walcro 15mm x 600mm)
- 1 x Spout (Walcro - CIRS Spout Basin 15mm)

825010



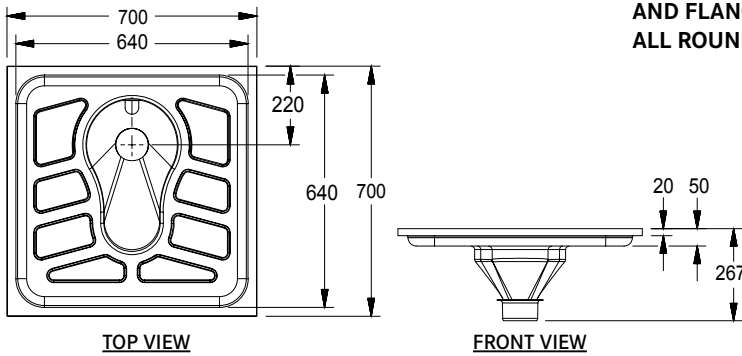
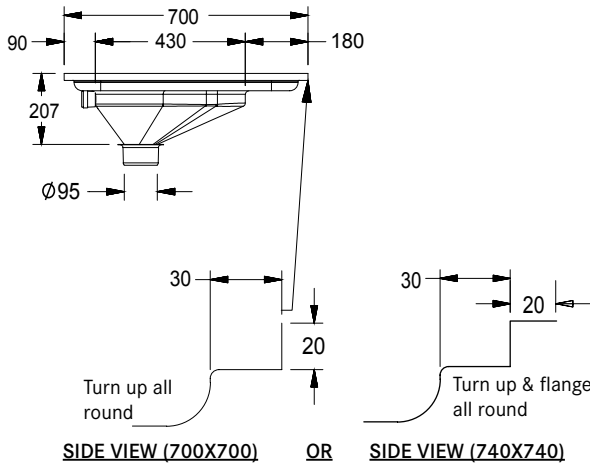


Squat Pan

Franke Model 700x700mm or 740x740mm... (please specify) Squat Pan. Unit to be manufactured from Grade 304 (18/10) Stainless Steel, 1,2mm gauge with the foot plate and flush bowl pressed into one piece. The foot plate tray to be pressed in raised pattern on both sides in front of the flush bowl. The unit to be fitted with a rear entry flushing spreader that will self seal with the 38mm or 41mm flushing pipe (please specify), waste outlet with a 110mm external diameter, suitable for fitting to a standard 110mm PVC or cast iron waste connector.

- Grade 304 (18/10) Stainless Steel, 1.2mm gauge
- Hygienic pan cannot chip or crack
- Designed for the highest level of anti-vandal resistance
- Heavy duty construction external surfaces 1.2mm gauge
- Fully pressed design with raised tread plates
- Concealed back entry flush pipe inlet suitable for surface mounted or concealed flush valves, low or high level cisterns
- Supplied with flushing spreader
- Flushes with 9 Litres Low Level Cistern

SQUAT PAN WITH 20 MM TURN UP ALL ROUND	700x700mm	356014
SQUAT PAN WITH 20 MM TURN UP AND FLANGE ALL ROUND	740x740mm	356013



SQUAT PAN & URINAL

Security Type Urinal

SBE Barron Bowl Urinal (Security Type)

Franke Model SBE (Back Entry Inlet) Security Barron Bowl Urinal, 316x425x241mm. Unit to be manufactured from Grade 304 (18/10) Stainless Steel, 1,2mm gauge. Unit to be supplied complete with a perforated waste outlet, with a 50mm diameter Stainless Steel outlet pipe which extends 250mm through the back wall. Bowl to be fitted with two security type mounting brackets for fixing with 4xM8 wall bolts for mounting to the wall. (bolts elsewhere measured).

- Grade 304 (18/10) Stainless Steel
- Heavy duty construction external surfaces of 1.2mm gauge Stainless Steel
- Provision for secured fixing to wall
- Back entry perforated outlet to suit standard 50mm waste pipe connection

SBE BARRON BOWL URINAL	316x425x241mm	333261
-------------------------------	---------------	---------------

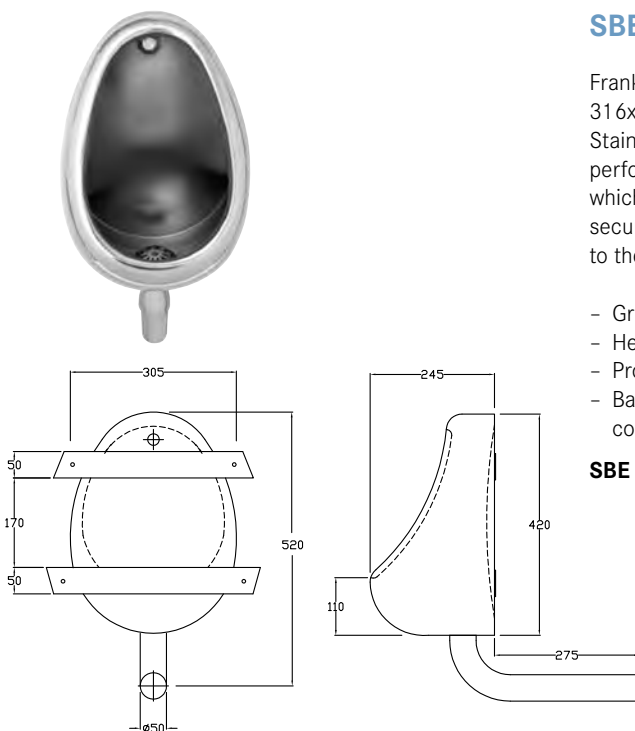
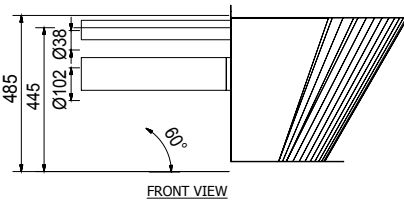
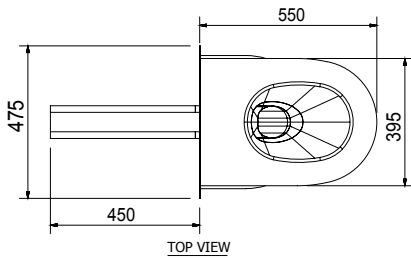
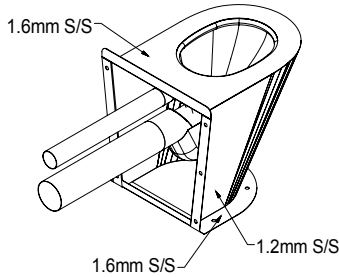


IMAGE	TYPE / MODEL	DIMENSIONS (L X D X H)	INLET	PRODUCT CODE
-------	--------------	------------------------	-------	--------------



SAPX597 Wall & Floor Mounted Shrouded WC Pan - Maximum Security - NEW
with 450mm extended inlet & outlet, flanges outwards.

Franke Model SAPX597 Heavy Duty Wall and Floor Mounted WC Pan 395x550x485mm high. Unit to be manufactured from Grade 304 (18/10) Stainless Steel, 1,2mm and 1, 6mm gauge. Unit to be manufactured with a pressed concealed flushing rim and integral "P" Trap with a 100mm outlet pipe and a 38mm back entry inlet pipe extended to 450mm. The pan to be manufactured with a shroud, with external flanges for securing the pan through the wall and into floor with anchor bolts. (Bolts elsewhere measured).

- Grade 304 (18/10) Stainless Steel 1.2mm / 16mm gauge
- Hygienic and vandal resistant
- Pressed components to ensure consistent quality and performance
- 6 litres flushing
- Heavy duty outer casing conceals the plumbing
- Pressed concealed flushing rim
- Provision for secured fixing through wall and into floor
- Optional outlet and flush inlet pipes are available, which can shortened /lengthened to suit plumbing.
- Sub-assembly of pan is pickled and passivated to prevent corrosion of the welding inside the inlet and outlet pipes.

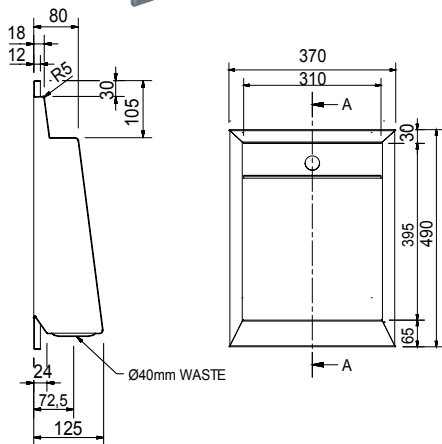
SAPX597	395x550x485mm	Back Entry	356185
----------------	---------------	------------	---------------

Water Conservation and Quality Assurance

Complies with SABS and LGA DIN EN International Standards. Please refer to page 3 for details.

Model Description

SAPX 597 with external flanges with 450 mm long extended pipes



SAPSDF Combination Wash Hand Basin & Drinking Fountain NEW

Franke Model SAPSDF Combination Wash Hand Basin & Drinking Fountain, size 370x490x125mm manufactured from Grade 304 (18/10) Stainless Steel, 1,2mm gauge. Unit to be manufactured as a welded construction with a 40mm waste outlet and is to be recessed 125mm into a single brick cavity. Basin is fitted with a self - closing metering bib tap at the top of the unit and is fitted with fixing lugs to secure the basin into the wall.

- Grade 304 (18/10) Stainless Steel
- Vandal proof
- Unit suitable for plastered and face brick walls
- Basin recessed into the wall
- Application: installed in cells of Prisons & Police Stations
- No crevices, fully welded construction
- All plumbing built into the wall and therefore unexposed
- Fitted with a self-closing metering tap

WHB & DRINKING FOUNTAIN

370x490x125mm	356158
---------------	---------------

IMAGE	TYPE / MODEL	DIMENSIONS (D X H)	PRODUCT CODE
-------	--------------	--------------------	--------------



Recessed Type Toilet Roll Holder

NEW

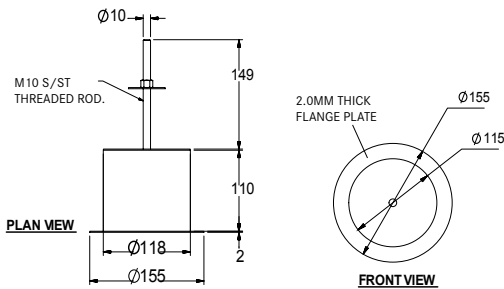
Franke recessed type toilet roll holder 118Øx110mm manufactured from Grade 304 (18/10) Stainless Steel, 2mm gauge. Unit with 20mm flange and 2 off x M10 threaded rods for bolting the unit through the wall.

- Grade 304 (18/10) Stainless Steel
- Provision for secured fixing through wall
- Heavy duty construction external surfaces of 1.6mm gauge Stainless Steel

RECESSED TOILET ROLL HOLDER 155Øx260mm

359635

TOILET ROLL HOLDER/ SHELVING WASH TROUGH



WMSHD Wall Mounted Heavy Duty Shelf

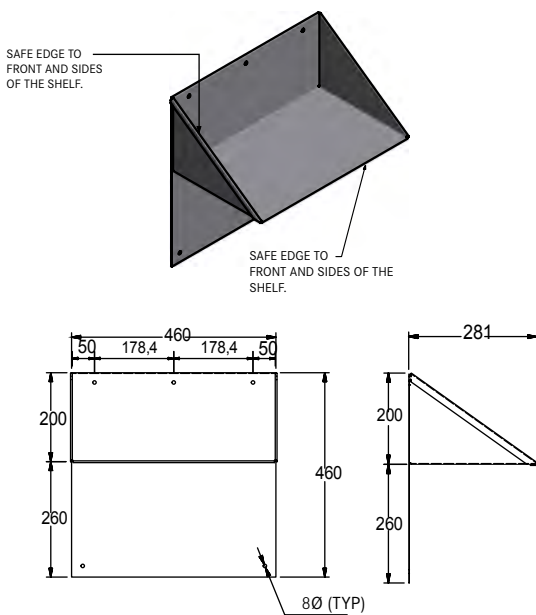
NEW

Franke Model WMSHD Wall Mounted shelf and back plate 460x280x460mm high manufactured from Grade 304 (18/10) Stainless Steel, 1,6 gauge.

- Grade 304 (18/10) Stainless Steel
- Provision for secured fixing to wall
- Heavy duty construction external surfaces of 1.6mm gauge Stainless Steel

WALL MOUNTED SHELF 460x281x460mm

356352



SIRX002HD Double Wash Trough

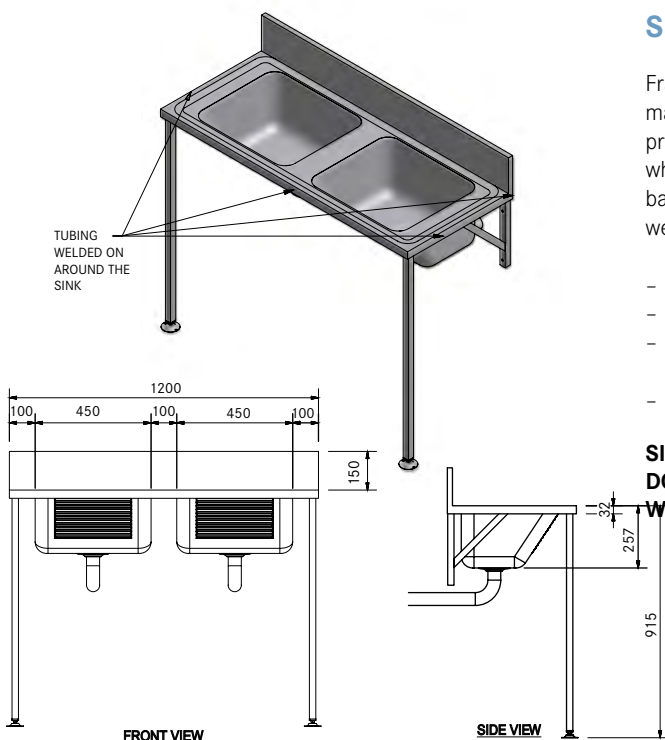
NEW

Franke Model SIRX002HD double compartment wash trough 1200x915mm manufactured from Grade 304 (18/10) Stainless Steel, 1,2mm gauge. With pressed SIRX bowls 500x450x240mm deep and 50mm diameter outlet pipe which extend 250mm through the back wall. Unit with a 150mm splash back to the back, 25mm square gallews brackets and front legs and a brace welded along the front of the trough.

- Grade 304 (18/10) Stainless Steel
- Provision for secured fixing to wall
- Heavy duty construction external surfaces of 1.2mm gauge Stainless Steel
- Back entry outlet to suit 50mm waste pipe connection

SIRX002HD DOUBLE BOWL WASH TROUGH 1200x915mm

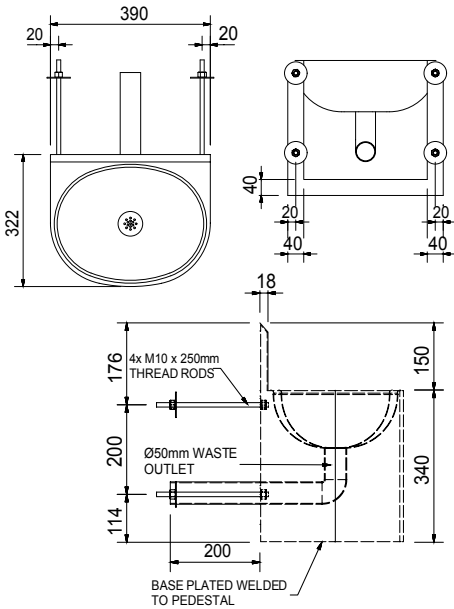
356814



Heavy Duty Wash Hand Basins

IMAGE	TYPE / MODEL	DIMENSIONS (L X D X H)	PRODUCT CODE
-------	--------------	------------------------	--------------

HDS - HEAVY DUTY SURROUND BASIN
Taps Excluded



HDS Heavy Duty Surround Wash Hand Basin - Security Type

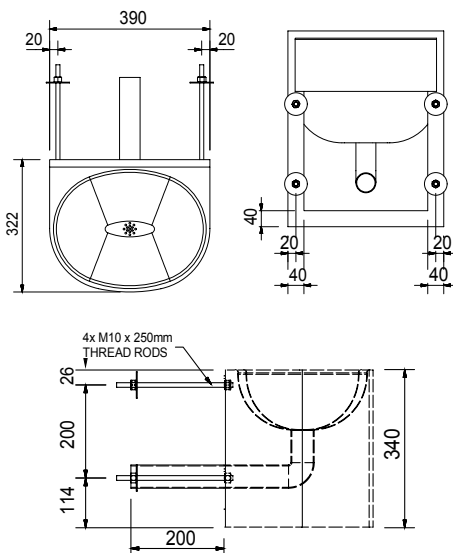
Franke Model HDS Surround Wall Mount Basin, 390x320x250mm. Unit to be manufactured from Grade 304 (18/10) Stainless Steel, 1.2mm gauge. Unit to be manufactured with a pressed bowl 360x280x140mm deep and an outer casing with a welded base plate. Basin to be supplied complete with a pressed perforated waste outlet, with a 50mm diameter Stainless Steel outlet pipe which extends 250mm. Unit to be supplied with four x 8mmØx250mm long galvanised mild steel treaded rods for fixing the basin to the wall.

- Grade 304 (18/10) polished Stainless Steel
- Heavy duty construction external surfaces of 1.2mm gauge
- Basin with pressed bowl
- Hygienic and vandal resistant
- 150mm splashback with tap holes (HDSSB Model)
- Provision for secured fixing to wall
- Fully enclosed with concealed plumbing and extended Stainless Steel outlet through wall
- Heavy duty construction external surfaces of 1.2mm gauge Stainless Steel
- Back entry perforated outlet to suit standard 50mm waste pipe connection

HDS BASIN ONLY	390x320x250mm	325317
---------------------------	---------------	---------------

WASH HAND BASINS

HDSSB - HEAVY DUTY SURROUND BASIN WITH SLASHBACK
Taps Excluded



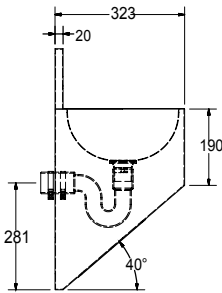
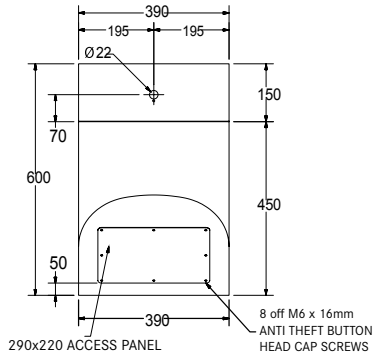
HDSSB Heavy Duty Surround Wash Hand Basin - Security Type - with Splash Back

Franke Model HDSSB Surround Wall Mount Basin, 390x320x250mm, with a 150mm splash back. Unit to be manufactured from Grade 304 (18/10) Stainless Steel, 1.2mm gauge. The unit to be manufactured with a pressed bowl 360x280x140mm deep and an outer casing with a welded base plate. Basin to be supplied complete with a pressed perforated waste outlet, with a 50mm diameter Stainless Steel outlet pipe which extends 250mm. Unit to be supplied with four x 8mmØx250mm long galvanised mild steel treaded rods for fixing the basin to the wall.

- Grade 304 (18/10) polished Stainless Steel
- Heavy duty construction external surfaces of 1.2mm gauge
- Basin with pressed bowl
- Hygienic and vandal resistant
- 150mm splashback with tap holes (HDSSB Model)
- Provision for secured fixing to wall
- Fully enclosed with concealed plumbing and extended Stainless Steel outlet through wall
- Heavy duty construction external surfaces of 1.2mm gauge Stainless Steel
- Back entry perforated outlet to suit standard 50mm waste pipe connection

HDSSB BASIN WITH SPLASHBACK	390x320x250mm	325318
--	---------------	---------------

IMAGE TYPE / MODEL DIMENSIONS (L X D X H) PRODUCT CODE



HDSWMB Heavy Duty Surround Wash Hand Basin NEW

Franke Surround Wall Mount Basin 390x320x250 mm with a 150mm splash back manufactured from Grade 304 (18/10) Stainless Steel 1.2mm gauge in a satin finish. The unit has a pressed bowl 360x280x140mm deep and a polished outer casing with a 40 degree angled base with an inspection panel with security screws. Unit complete with a 40mm perforated waste outlet. Basin supplied with four 8mmx250mm long galvanised mild steel treaded rods for fixed through the wall.

- Provision for secured fixing through wall
- Fully enclosed with concealed plumbing and extended outlet through wall
- Heavy duty construction external surfaces of 1.2mm gauge Stainless Steel
- Back entry perforated outlet to suit standard 50mm waste pipe connection
- 40 Degree angle base with an inspection panel with security screws

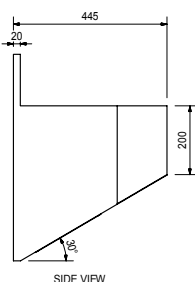
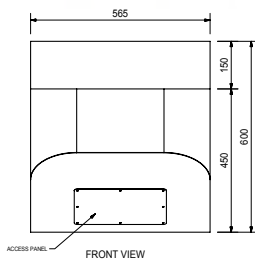
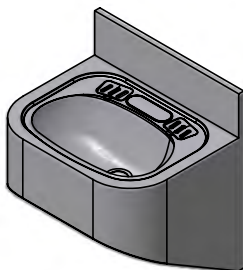
HDSWMB HEAVY DUTY WASH HAND BASIN 390x323x600mm **357173**

Optional Plumbing Fittings

Walcro 155UWS Metering Basin Valve **408937**

Walcro BBD/15 Basin Spout **420896**

SHELVING



HDWHB Heavy Duty Wash Hand Basin Security Type NEW

Franke Wash Hand Basin Wall Mount Basin 454x390x450mm with a 150mm splash back manufactured from Grade 304 (18/10) Stainless Steel 1.2mm gauge in a satin finish. The unit has a pressed bowl 410x300x140mm deep and a polished outer casing with a 34 degree angled base with an inspection panel with security screws. Unit complete with a 40mm perforated waste outlet. Basin supplied with four 8x250mm long galvanised mild steel treaded rods for fixed through the wall.

- Grade 304 (18/10) polished Stainless Steel
- Fully enclosed with concealed plumbing and extended outlet through wall
- Heavy duty construction external surfaces of 1.2mm gauge Stainless Steel
- Back entry perforated outlet to suit standard 50mm waste pipe connection
- 35 Degree angle base with an inspection panel with security screws

HDWHB WASH HAND BASIN 454x389x600mm **356672**

IMAGE



WASHROOM ACCESSORIES

Franke have a wide range of Stainless Steel accessories for all applications; hands free, wall mounted and recessed accessories. Our product range includes solid Stainless Steel bathroom accessories, ideally suited for such applications as: hospitals and clinics.

The new Rodan range of accessories, its timeless design with angular side profiles lends itself to the contemporary décor of heavily frequented washrooms and rest rooms.

HANDS FREE ACCESSORIES

Franke always strives to find the ultimate hygiene solutions without compromising quality and durability. The hands free accessories offer a hygienic solution for usage in heavily frequented washrooms, wards and rest rooms. The range includes a sensor operated: soap dispenser, paper towel dispenser and hand dryer



GRAB RAILS

Franke grab rails offer a secure support, thanks to Franke's Fine-Grip surface finish, for use in private homes and public, clinical and care sectors.

METERING TAPS & MIXERS



WATER MANAGEMENT

Complementing the Franke range of accessories, a new range of self closing/sensor operated basin taps and mixers have been added. The taps and mixers are of a heavy duty design to improve hygiene and decrease water consumption in public ablutions.

The range comprises of an electronic sensor operated mixer and self closing taps and mixers.



TRIFLOW WATER PURIFICATION MIXER

Discover the unique advantages and health benefits of the Franke Triflow water filtration system. Designed and fitted with a premium-grade carbon activated cartridge, the Franke Triflow is a health-conscious and quality drinking water filtration system. The Triflow dispenses hot, cold and perfectly filtered drinking water. The filtration system has the ability to filter out chlorides, odours and sedimentation from the water, it however does not 'strip' the water of its goodness and retains beneficial minerals such as calcium and magnesium - essential for a healthy diet.

ZIP HYDROBOILS AND CHILLERS

Zip Hydroboils are convenient plumbed-in boiling water systems that deliver instant boiling water 24 hours a day. It is a sealed system to provide ultimate hygiene and low electricity consumption. It is steam free and low maintenance.

Zip chillers are manufactured to provide chilled water under extreme temperatures. The units are plumbed to provide low operating costs, together with convenience.



IMAGE	TYPE / MODEL	PRODUCT CODE
-------	--------------	--------------



HOSPITAL & MORTUARY PRODUCTS

Franke is the leading supplier of sanitaryware products to hospitals, clinics and mortuaries, environments where hygiene is of the highest priority. Our design and construction ensure that our products meet the demands of safety, hygiene and quality. Our hospital range includes:- Stainless Steel Slop Hoppers, Drip Sinks, Bottle Racks, Bed Pan Wash Up Sinks, Surgeon Scrub-Up Units, Plaster of Paris Sinks and Baths. Our mortuary range includes:- Rapid Transfer Gross Anatomy Trolleys, Body Trays, Post Mortem Tables, an Instrument Cabinet and Writing Desk.

INDUSTRIAL PRODUCTS

The range includes Industrial Sinks, Tables, Wall Benches and Shelving. Heavy duty industrial sinks and tables with sound deadening under frames. The range is complimented by a selection of modular designed shelving systems for medical and catering purposes.



DEKO 25

The DEKO 25 can be situated on a dedicated DEKO stand accessory or a cabinet, as well as, be positioned undercounter. The DEKO 25 meets the performance and design requirements stated in EN ISO 15883 parts 1 & 2, as well as the safety requirements stated in IEC 61010-2-040. Utilising the power of the 260 litres per minute circulation pump, process and cleaning results are guaranteed throughout the wash chamber. The capacity also allows for the insertion of additional wash racks to facilitate the washing of cannulated instruments, dental handpieces, hoses, glassware and rigid scopes.

DEKO 25 Base Model

355001



DEKO 190

DEKO 190 has a large wash chamber and capacity for automatic emptying and processing of 2 bedpans with lids and 4 urine bottles simultaneously. The integrated drop down shelf provides space for 4 hand wash basins or a mop bucket with seating ring. The shelf can also be utilised as a base to accommodate and process inserts and washing accessories e.g. kidney dishes, bowls, vases, toilet brushes/holders, as well as, various hollowware.

DEKO 190 Base Model

355011



DEKO 260 Washer Disinfector (NEW MODEL 2013)

DEKO 260 Washer-disinfector-dryer is designed and manufactured to be fully compliant with the requirements of ISO EN 15883 Parts 1 & 2. It builds on the already well proven reliability and simple operation synonymous with Franke and ensures thorough cleaning and efficient processing of reusable medical and laboratory equipment.

DEKO 260 Base Model

355005



DEKO 2000

The DEKO 2000 is designed and constructed to meet the performance and design requirements stated in EN ISO 15883-1 Washer-disinfectors - Part 1: General requirements and in Part 2: Requirements and tests for surgical instruments, anaesthetic and respiratory equipment, hollowware, utensils, glassware etc., as well as, the safety requirements stated in IEC 61010-2-40: Particular requirements for washer-disinfectors used in medical, pharmaceutical, veterinary and laboratory fields.

DEKO 2000 Base Model

355007



DEKO 2200

DEKO 2200 Drying cabinet is designed especially for drying surgical instruments, anaesthetic hoses & equipment, as well as other reusable items used in patient health care. It is dimensioned particularly for use together with the DEKO-2000 -series washer- disinfectors. The chamber can accommodate two full loads (4+4 shelves) from the washers. The sound and heat insulated double walls of the cabinet are made of AISI304 stainless steel. DEKO 2200 is available as a single door or pass-through model, left or right-hinged.

DEKO 2200 Dryer

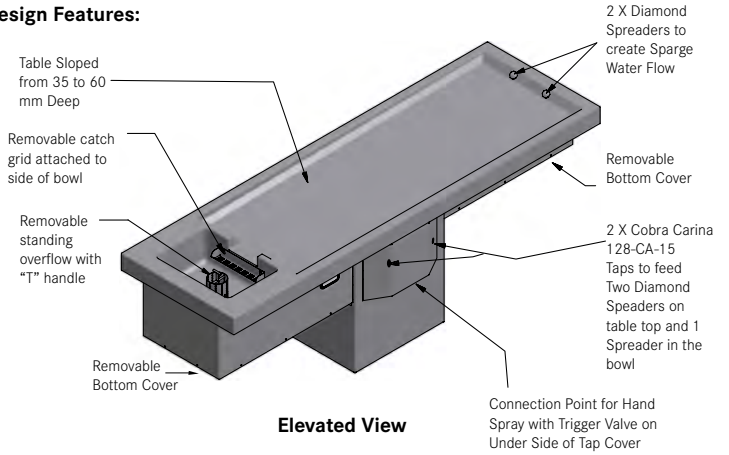
355003 16

New Mortuary Products

IMAGE

Franke have a reputation for the design and manufacturing of high quality stainless steel washroom and hospital equipment. Franke are now offering services to the field of mortuary medical equipment in providing a total design and manufacture service of autopsy tables, body storage racks, body trays and transport trolleys. Our services include an in-house INVENTOR 3D design facility, enabling us to provide a complete service from concept to design to manufacture and supply of completed products.

Design Features:



Elevated View

AUTOPSY TABLE

Franke model KZ Autopsy table is pedestal style table that is ergonomically designed to facilitate free operator movement when using the table. The table is manufactured in Grade 316 stainless steel with integrally constructed bowl and is supplied complete with all the plumbing fittings and is fitted with a 110mm waste outlet with a removable standing overflow.

BODY RACKS

Standard and Obese Body Racks

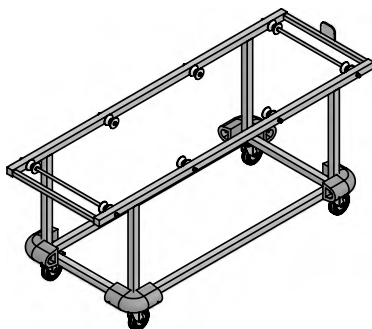
Body Racks are manufactured to comply with the standard mortuary design specification and dimensions, the struts and main bearers are fabricated from 40x40x1,5mm thick Stainless Steel square tubing and the stays and roller supports are 3mm thick 304 Stainless Steel. The rollers are nylon and rollers shafts and rods are 16mm diameter Grade 304 Stainless Steel. The racks are designed to add additional roller shafts assemblies and bearers to extend the racking to accommodate additional body trays (banks of 2, 3 etc.).

TRANSPORT TROLLEYS & BODY TRAYS

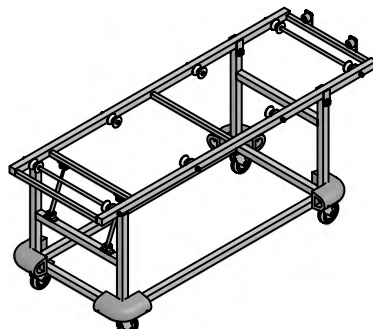
This is an essential part of the post-mortem laboratory and in the hospital the transport and hydraulic lifting trolleys are designed to transport the body from cold chamber racks to display trolley or autopsy table.



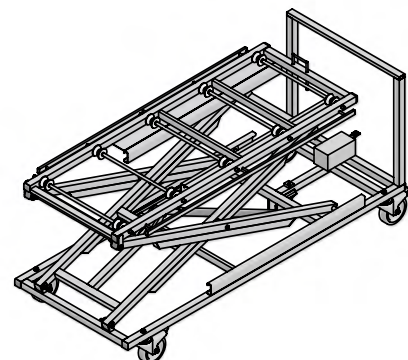
MORTUARY PRODUCTS



Franke Model TLT Tilting Trolley



Franke Model TT Transport Trolley



Franke Model ET Elevation Trolley
Able to raise up to ± 1.85 Meters High



THE INTERNATIONAL CERTIFICATION NETWORK
CERTIFICATE

IQNet and
 DQS GmbH Deutsche Gesellschaft zur Zertifizierung von Managementsystemen
 hereby certify that the company

Franke Kitchen Systems (Pty) Ltd
 1194 South Coast Road, Mobeni
 Durban
 4060
 South Africa

has implemented and maintains a **Quality Management System**.

Scope:
 Design, Manufacture and Sales of Stainless Steel Sinks, Domestic and Industrial, Hospital and Sanitary Ware,
 Catering Equipment, Zip Hydroblits and Sourced Products.

Through an audit, documented in a report, it was verified that the management system
 fulfills the requirements of the following standard:

ISO 9001 : 2008

Date of certification 2013-03-07
 Valid until 2016-03-06
 Registration Number: DE-283000 QM08

Michael Drechsel
 Michael Drechsel
 President of IQNet

G. Bleichschmidt
 Götz Bleichschmidt
 Managing Director of DQS GmbH

IQNet Partners:
 AENOR Spain AFNOR Certification France AIB-Vincotte International Belgium ANCE-SIGE Mexico APCER Portugal CCC Cyprus
 CISA Italy CQC China CGM China DQS Czech Republic Dqs Cert Croatia DQS Holding GmbH Germany DS Denmark
 FCV Brazil FONONORMA Venezuela ICONTEC Colombia INPC Mexico INKORP Tunisia
 Inspecto Certification Finland IRAM Argentina JQA Japan KFO Korea MIRTEC Greece MSZT Hungary Nemko AS Norway
 NSAI Ireland PCBQ Poland Quality Austria Auctra IRI Russia SII Israel SCS Slovenia SIRIM GAS International Malaysia
 SGS Switzerland SPRAC Romania TEST S1 Petersburg Russia TSE Turkey YQS Serbia
 IQNet is represented in the USA by: AFNOR Certification, CISA, DQS Holding GmbH and NSAI Inc.
 * The list of IQNet partners is valid at the time of issue of this certificate. Updated information is available under www.iqnet-certification.com.

TEST REPORT **SABS**

Your ref : Order No: 287072
 Our ref : ZH 223 a
 Enquiries : Karel Deist
 Tel : 012 428-7029
 Page : 1 of 5
 Date : 02-11-2005

FRANKE KITCHEN SYSTEMS
 Attn: Mr. C. Robinsan
 P.O Box 72395
 South Coast Road
 Mobeni
 4060

TESTING TO SABS 1733:2002

0 SUMMARY
 A full specification test was performed on the Franke Kitchens prison toilet pan submitted. This toilet pan passed these tests. Refer to clause 4 for the detail of the test performed and to clause 9 for a summary of the results.

1 DESCRIPTION OF SAMPLE
 The low flushing toilet pan was submitted by Mr C. Robinsan of and on behalf the company Franke Kitchen Systems.

Sample No.	Quantity	Sample Description
ZH 223 a	1	Franke Kitchens stainless steel prison toilet pan

2 REPORT CONDITIONS
 The contents of this test report refers to the samples detailed above and does not refer that the above samples (or any other similar samples) are SABS approved for quality and/or performance.
 In the instance where this report is used to verify compliance with the JAS-ANZ Accreditation Scheme, the validity of the test reports shall not exceed a period of one (1) year.

3 SAMPLE SUBMITTED
 The prison toilet pan was received in a good condition and was suitable for testing.
 Date sample received : 31 - 10 - 2006
 Date test started : 01 - 11 - 2006
 Date test completed : 02 - 11 - 2006

4 TEST REQUESTED
 To test the Franke Kitchens stainless steel prison toilet pan submitted for full compliance with the requirements of: SABS 1733:2002 and in addition, with a 6 litre concealed cistern and with the WCLP flush valve set for a 6 litre flush.

1 Dr Laggen Road Groenkloof, Private Bag X191 Pretoria 0001, Tel +27 (0)12 428-7911, Fax: +27 (0)12 344-1568.
 This test was performed by SABS Commercial (Pty) Ltd.
 This report and the test results relate only to the specific sample(s) identified herein. They do not imply SABS approval of the quality and/or performance of the item(s) in question and the test results do not apply to any similar item that has not been tested.
 Refer also to the complete conditions printed on the back of this page.

LGA QualTest GmbH
 Sanitär- und Abscheidechnik

LGAI

DAP-PL-1524.23 Durch die DAP Deutsches Akkreditierungssystem Prüfwesen GmbH akkreditiertes Prüflaboratorium
 Zertifiziert nach DIN EN ISO 9001:2008

LGA-Zertifikat Nr. 7381437-01z

Dem Hersteller:
 Franke Washroom Systems
 Oberer Achdamn 52
 6791 HARD
 ÖSTERREICH

The Manufacturer:
 Franke Washroom Systems
 Oberer Achdamn 52
 6791 HARD
 ÖSTERREICH

and Herstellwerk:
 Franke Kitchen Systems (Pty) Ltd
 Technical Department
 P. O. Box 72395
 MOBENI 4060
 SÜD AFRIKA

and Production plant:
 Franke Kitchen Systems (Pty) Ltd
 Technical Department
 P. O. Box 72395
 MOBENI 4060
 SÜD AFRIKA

wird bescheinigt, dass die Prüfung des nachfolgend beschriebenen Bauprodukts:
 Wand-Tiefspülklosett aus nichtrostendem Stahl CMPX592 mit freiem Zulauf Klasse 1:
 Typ 6, Spüleinrichtung: A, Spülvolumen 6,0 l
 Typ 6, Spüleinrichtung: C, Spülvolumen 6,0 l
 Typ 4, Spüleinrichtung: A, Spülvolumen 4,0 l

is attested, that the following described building product:
 Wall-hung wash down WC pan of stainless steel CMPX592 with independent water supply
 Class 1:
 Type 6, flushing device: A, flush volume: 6,0 l
 Type 6, flushing device: C, flush volume: 6,0 l
 Type 4, flushing device: A, flush volume: 4,0 l

die Anforderungen folgender Norm erfüllt hat:
 DIN EN 997: 2008-03
 WC-Becken und WC-Anlagen mit angeformten Geruchsverschluss

has fulfilled the requirements according to the following standard:
 DIN EN 997: 2008-03
 WC pans and WC suites with integral trap

Die Einzelergebnisse der durchgeführten Prüfung sind im LGA-Prüfbericht Nr. 7381437-01 dargestellt.

The detailed results of the tests are shown in the test report no. 7381437-01 of the LGA.

Dieses LGA-Zertifikat kann als Grundlage für die CE-Konformitätserklärung durch den Hersteller genutzt werden.

This LGA-Certificate may constitute the basis for the CE-declaration of conformity by the manufacturer.

Dieses Zertifikat ist gültig bis 30.11.2013.

This certificate is valid until 30.11.2013.

Würzburg, 18.11.2006

LGA QualTest GmbH
 Sanitär- und Abscheidechnik

Michael F. Jungbluth
 Dipl.-Ing. (FH) Fries
 Stellvert. Fachzentrumsleiter

LGA QualTest GmbH • Dreikönigenstraße 31 • 97082 Würzburg • <http://www.lga.de>
 Tel +49 (0) 931 4106-166 • Fax +49 (0) 931 4106-165 • eMail: sa@lga.de

Seite 1 von 1
 Sitz und Registergericht Nürnberg HRB 20544
 Geschäftsführer: Hans-Hermann Ueffing
 Michael F. Jungbluth

global-mark® **W**

Certificate of Conformity

This certificate confirms that the company below complies with the following standard:

Company Name **Franke Kitchen Systems (Pty) Ltd**
 Company Other Name **Enware Australia Pty Ltd**
 Client ID **101090**
 Certification Standard **AS 1172.1-2005: Water closets (WC) - Pans**
 Scope of Certification **Refer to Certification Schedule - WaterMark Level 1 - C of C: 40048**
 Type of Certification **Product Conformance**

CERTIFICATE DATES:
 Certification Review Date **8/10/2009**
 Certification Expiry Date **29/07/2014**
 Certificate Issue Date **29/07/2009**
 Certificate Last Update Date

APPROVED COMPANY/SITE ADDRESS(ES):
Enware Australia Pty Ltd 9-11 Endeavour Road Caringbah 2229 NSW Australia
Franke Kitchen Systems (Pty) Ltd 1194 South Coast Road Mobeni, Durban 4060 - South Africa

The use of the Accreditation Mark indicates accreditation by the Joint Accreditation System of Australia and New Zealand in respect to those activities covered by JAS-ANZ accreditation.
 Refer to www.jas-anz.com.au/register for verification.

This certification remains valid until the above mentioned expiry date and subject to the organisation's continued compliance with the certification standard, and Global-Mark's Terms and Conditions.
 This Certificate of Approval remains the property of Global-Mark Pty Ltd, Company Number: ACN:106 087 614

Global-Mark Pty Ltd, Copyright 2005
 Page 1 of 1

CERTIFICATION MANAGER
Michael F. Jungbluth

CERTIFICATES

FRANKE KITCHEN SYSTEMS (PTY) LTD

CALL CENTRE

Tel 0861 372 653

Fax 0866 592 073

enquiry.fsa@franke.com

www.franke.co.za

DURBAN

1194 South Coast Road,

Mobeni, Durban, 4092.

South Africa

Tel +27 31 450 6300

Fax +27 31 450 6304

GAUTENG

77 Roan Crescent,

Sage Corporate Park North,

Old Johannesburg Road,

Midrand, 1682

South Africa

CAPE TOWN

Unit 1, Gold Street,

Northgate Business Park, Northgate Estate,

Cape Town, 7405

South Africa

DISCLAIMER

The information and dates supplied in this brochure are based on the information believed to be reliable, however are not binding and inaccuracies may occur.

Franke reserves the right to change Specification and design at any time without notice.

© 2013 by Franke Kitchen Systems (Pty) Ltd. All rights reserved under the Copyright Act of 1987 with the amendments. Reproduction of any of the content, full or partial, is allowed only with prior written approval of Franke Kitchen Systems (Pty) Ltd. No reasonable requests will be refused provided the conditions as laid out are met.



WASHROOM
SYSTEMS